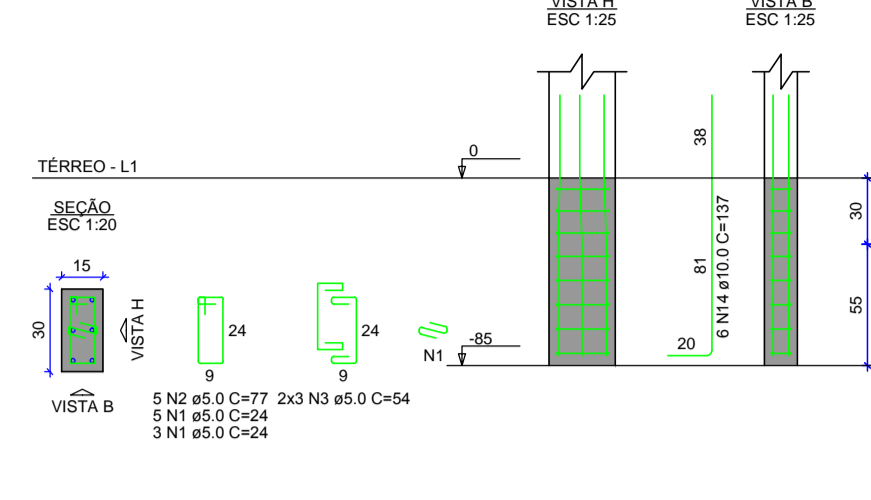
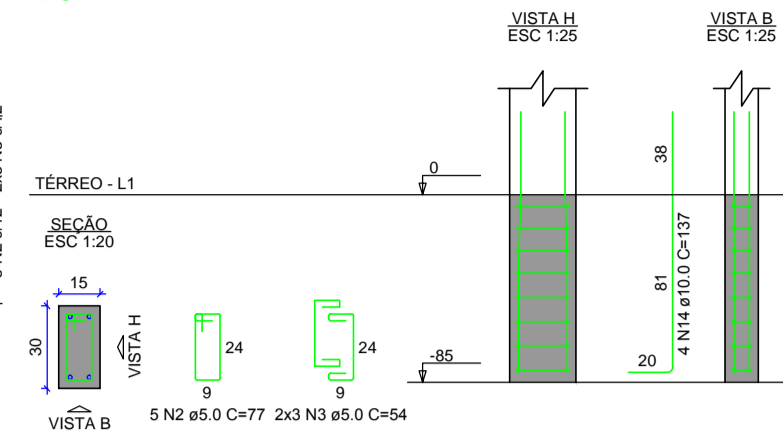


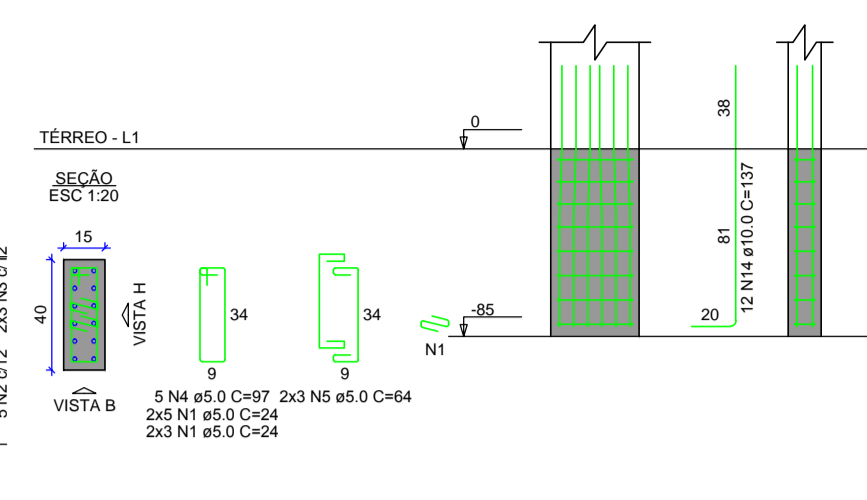
P1=P3=P4=P5=P8=P11=P12



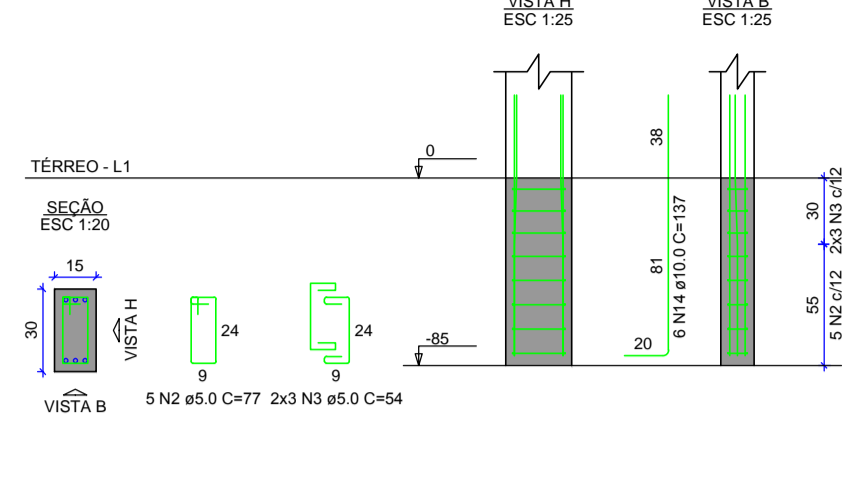
P2=P6=P7=P9=P10=P13=P14=P15=P17=
=P21=P22=P23=P26=P27=P28=P29=P30=
=P31=P32=P34=P38=P39=P40=P41=P42=
=P67



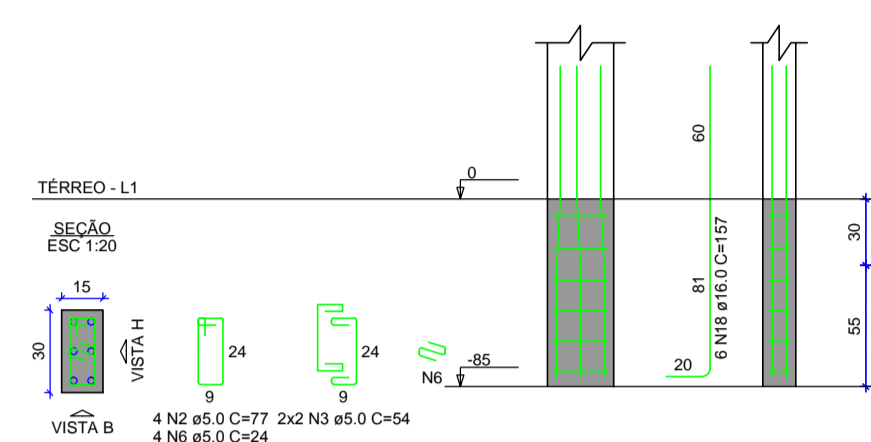
P16



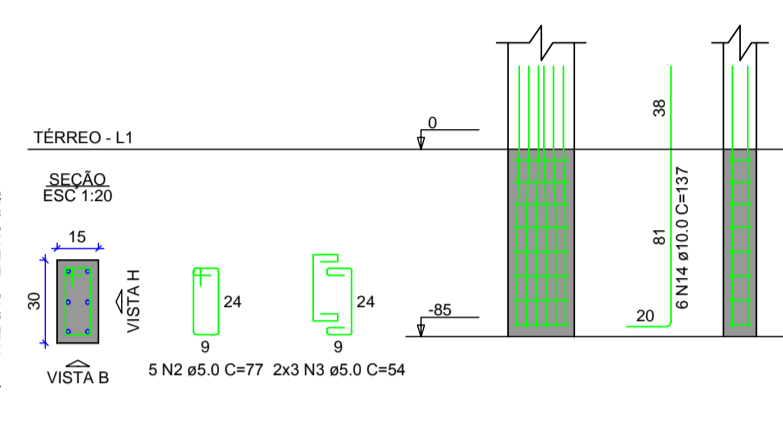
P18=P37=P43



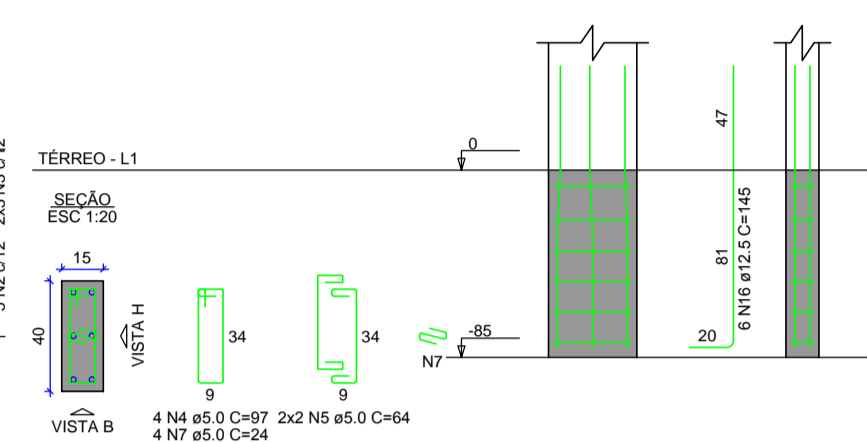
P19



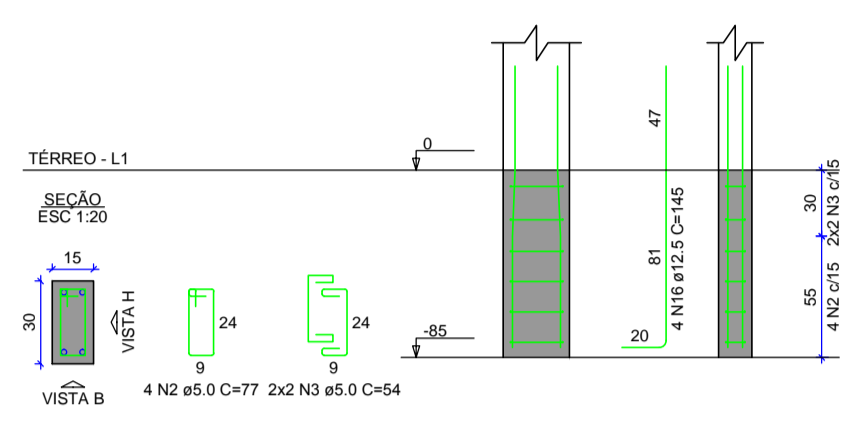
P20



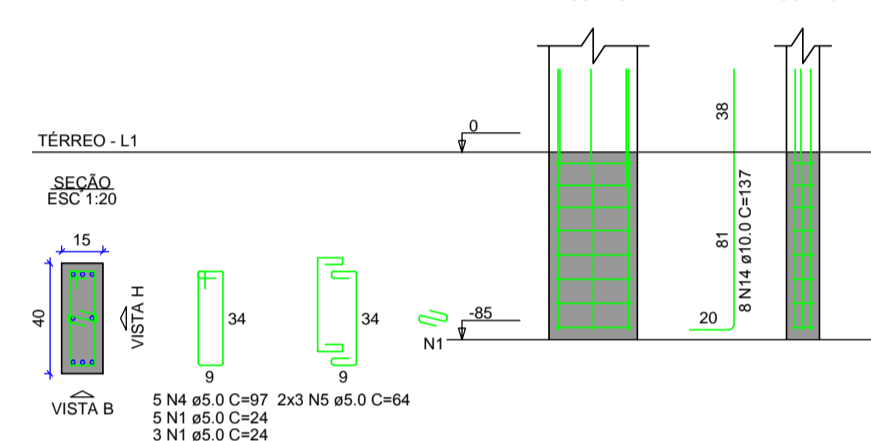
P24



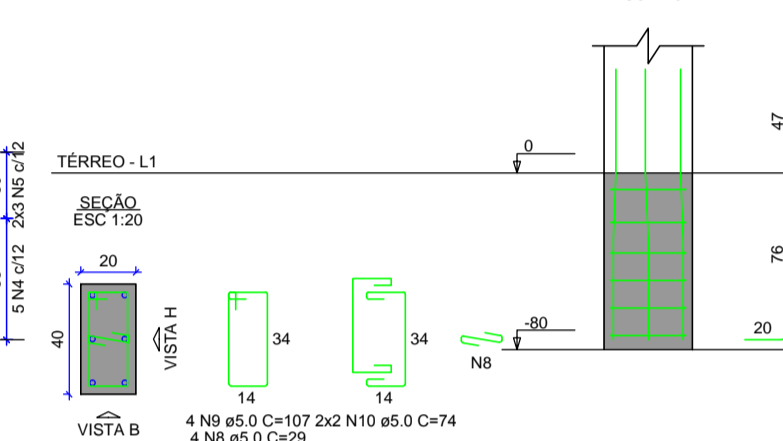
P25



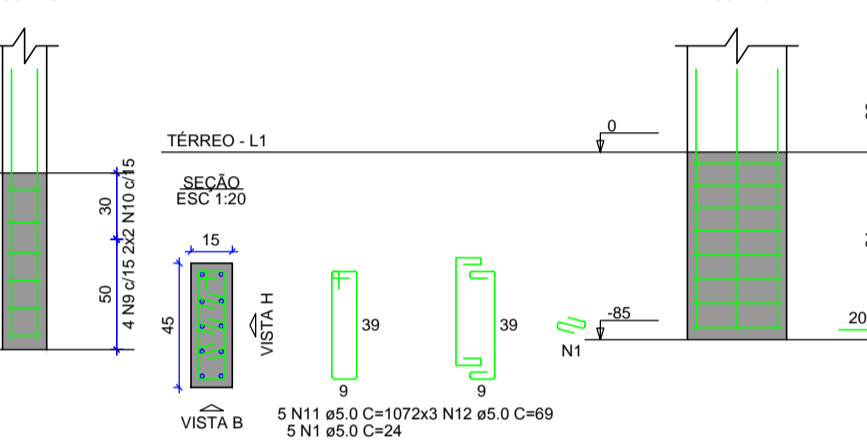
P33



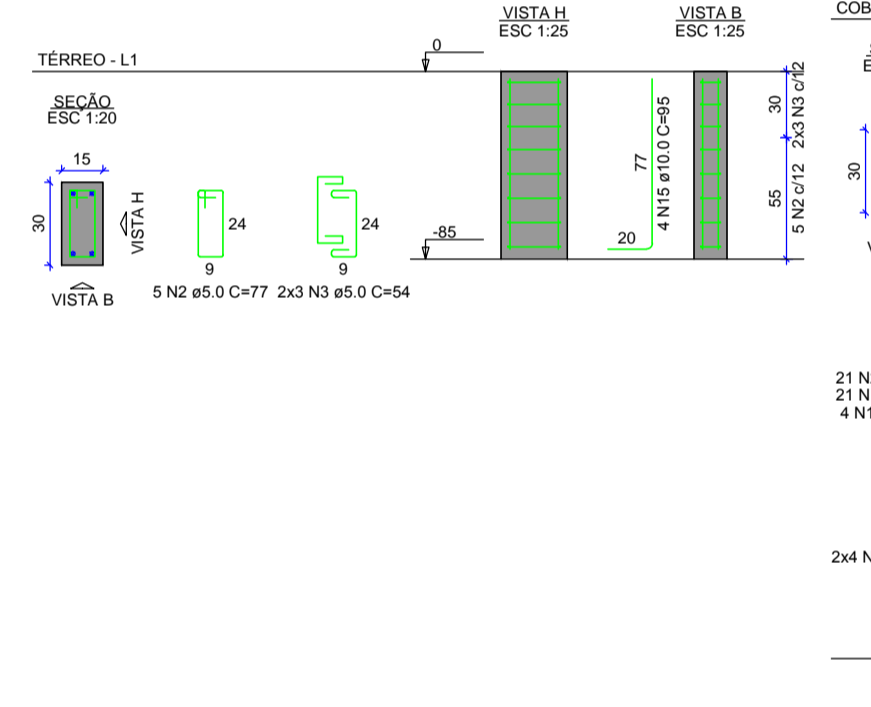
P35



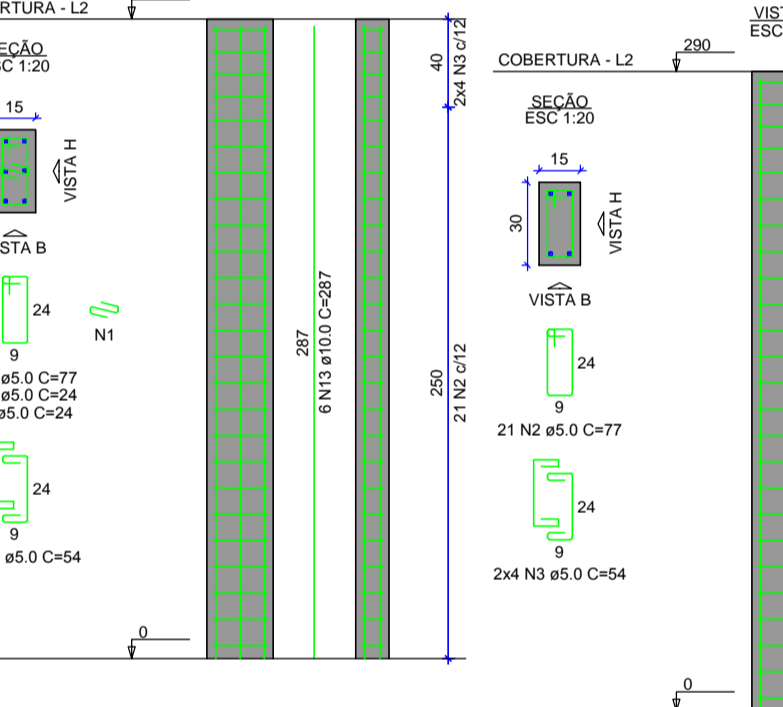
P36



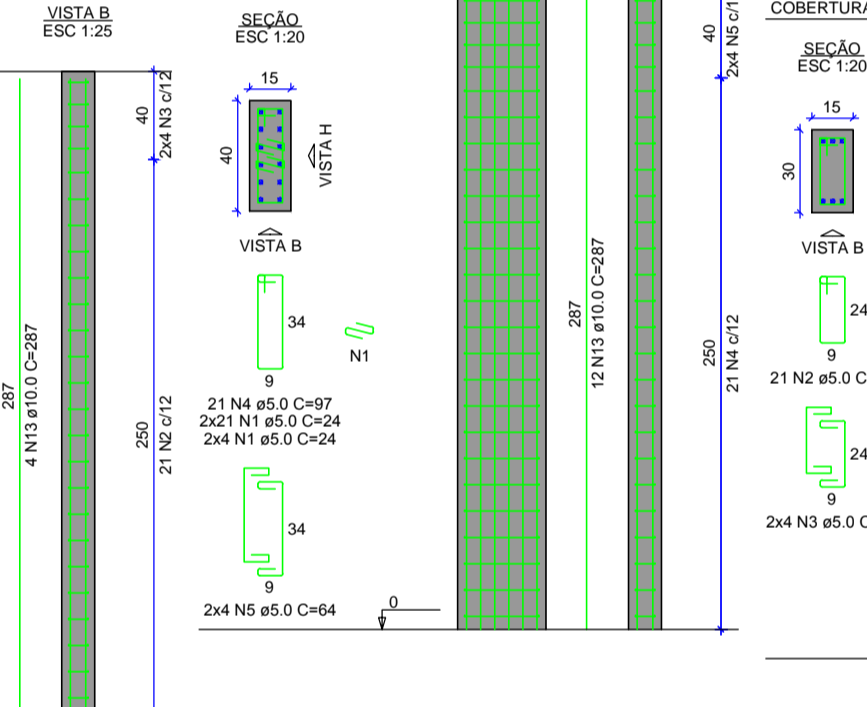
P44=P45=P46=P47=P48=P49=P50=P51=
=P52=P53=P54=P55=P56=P57=P58=P59=
=P60=P61=P62=P63=P64=P65=P66



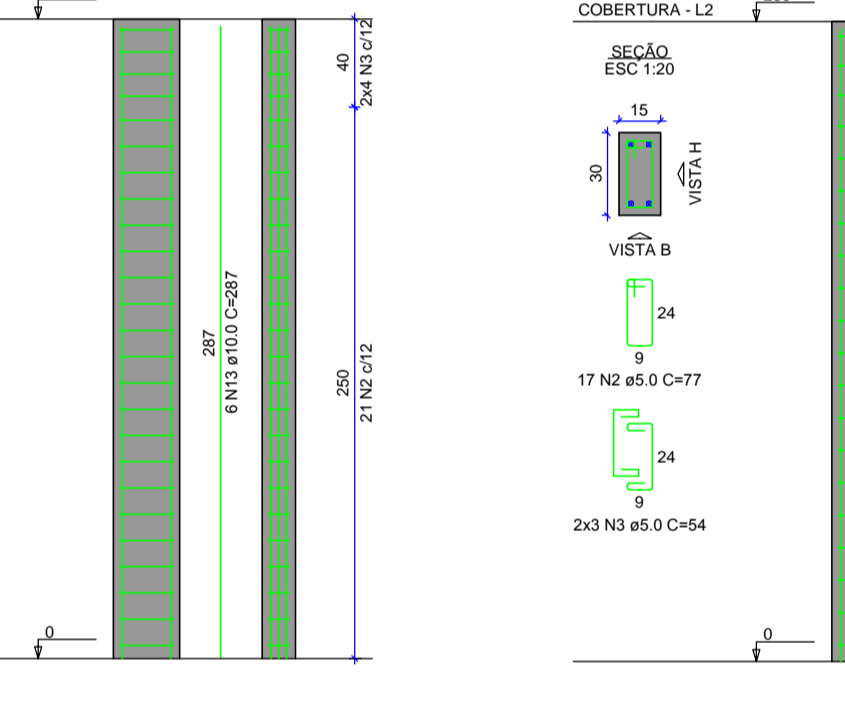
P1=P3=P4=P5=P8=P11=P12



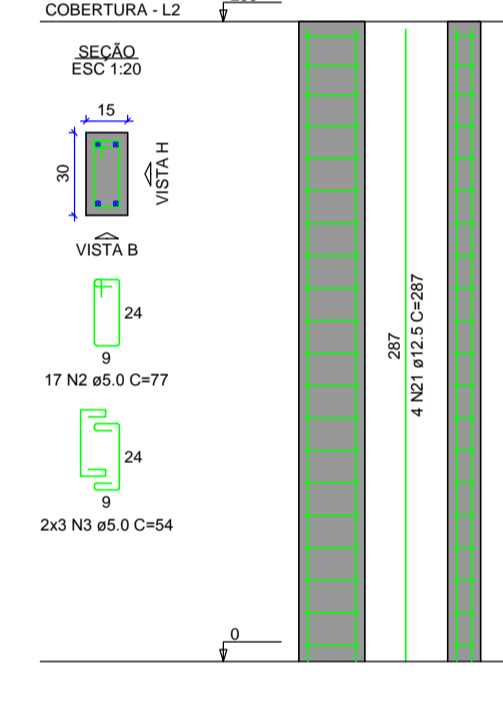
P16



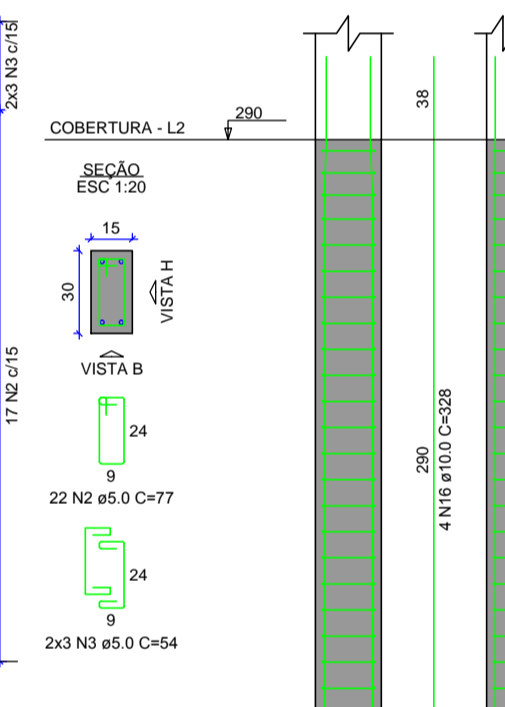
P18=P37=P43



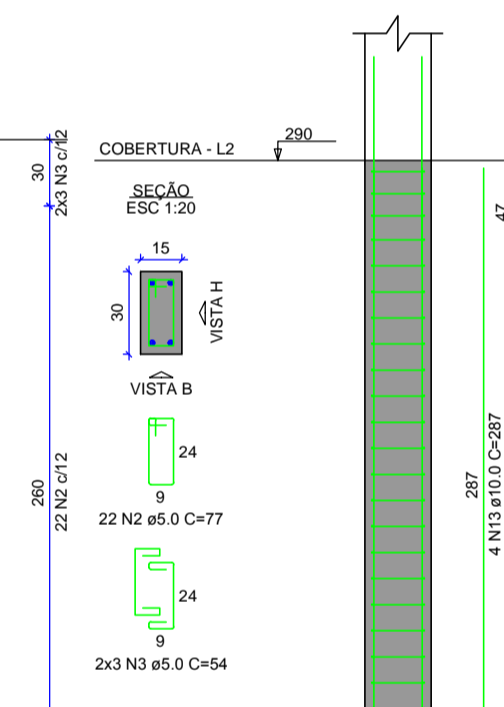
P25



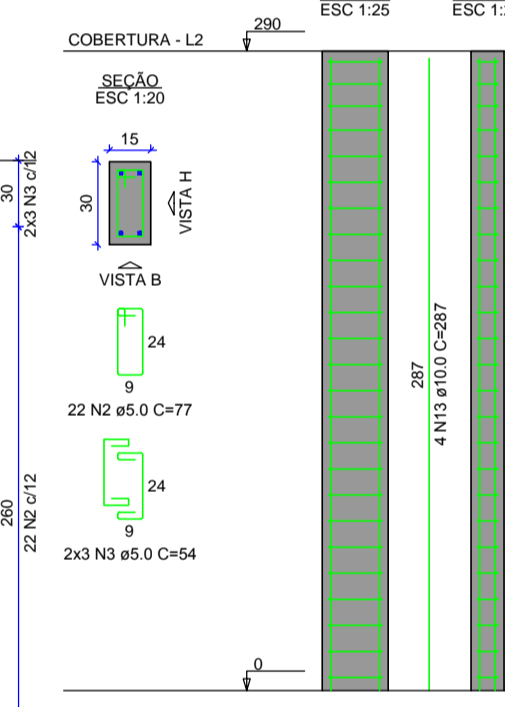
P26=P28



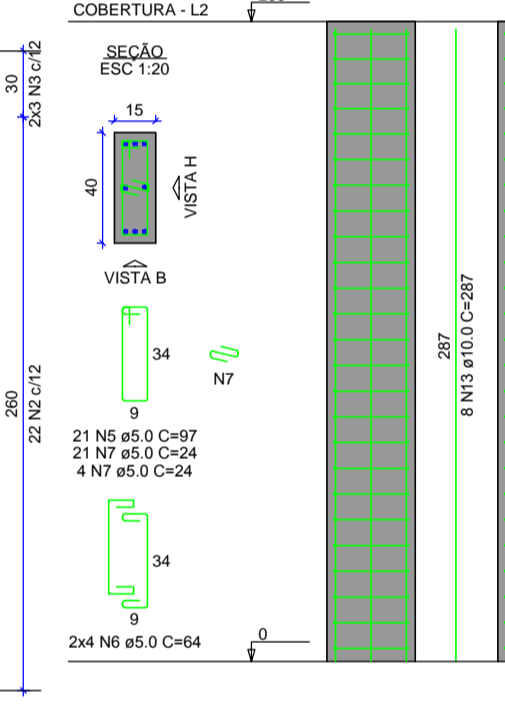
P27



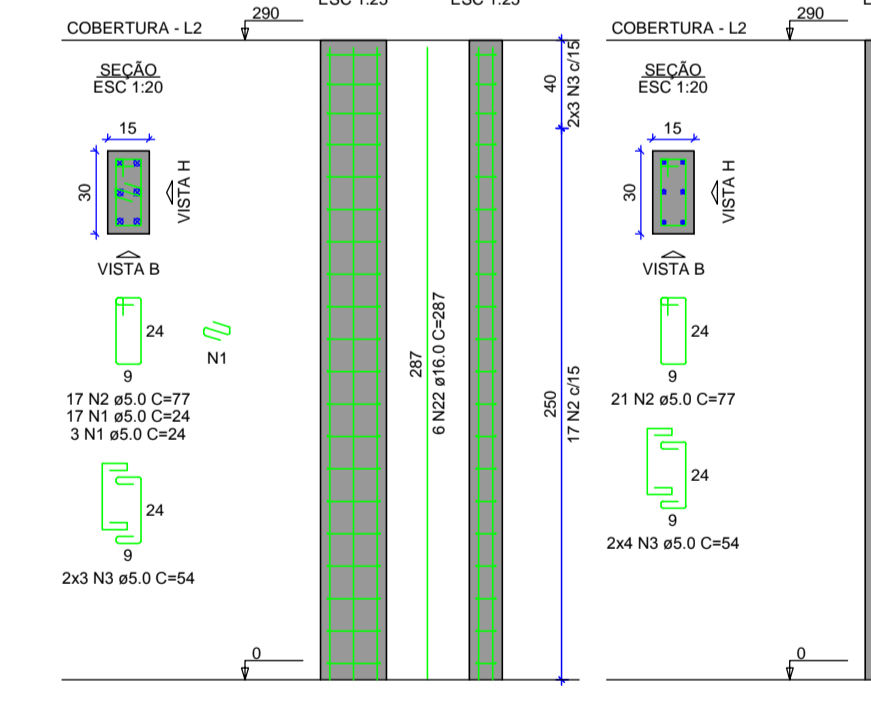
P30=P32=P42=P67



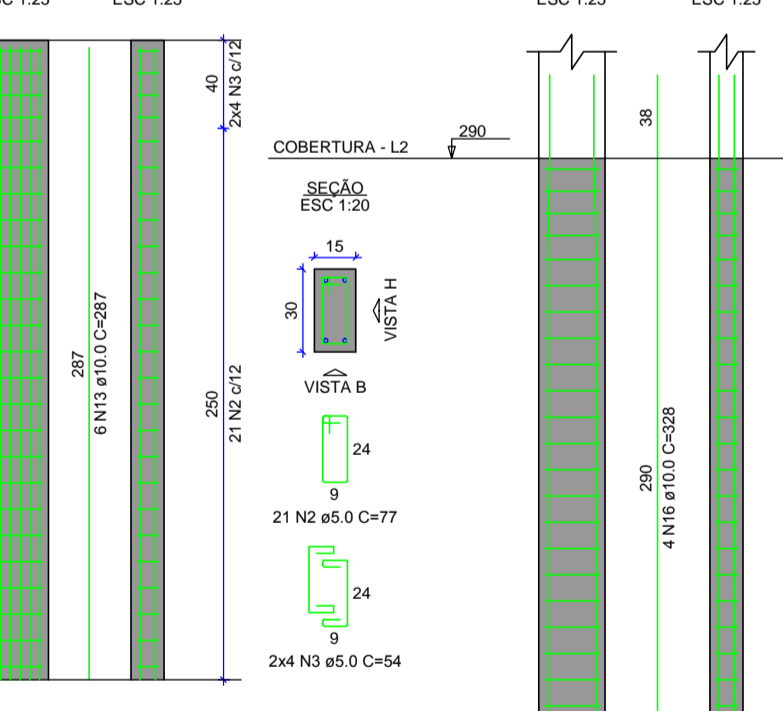
P33



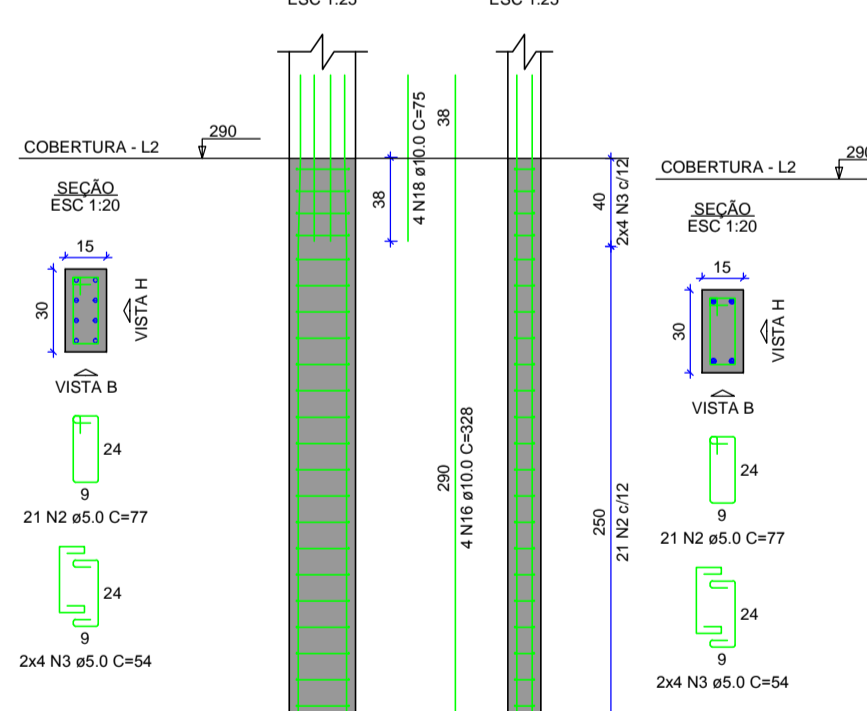
P19



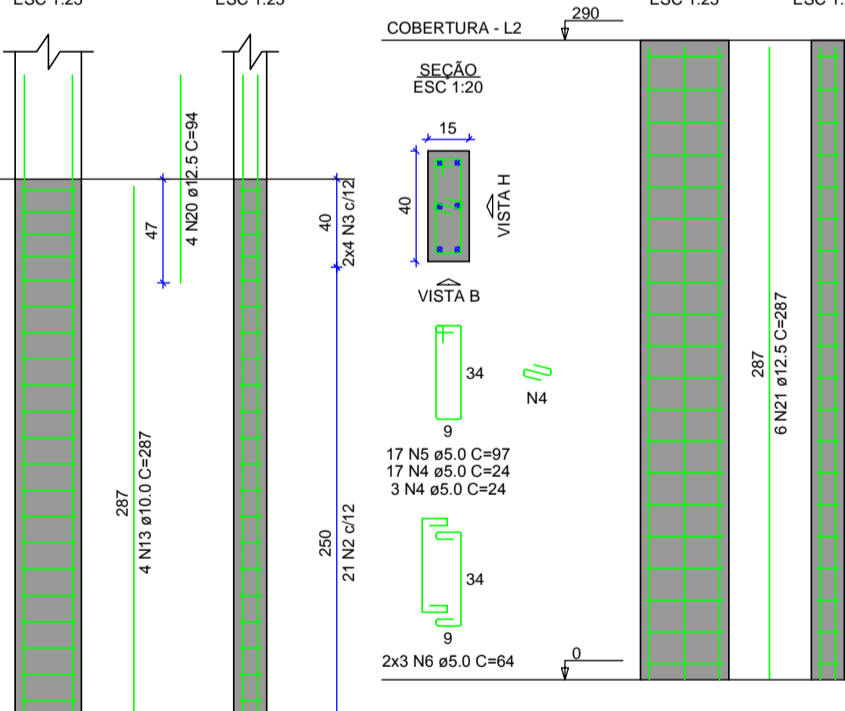
P20



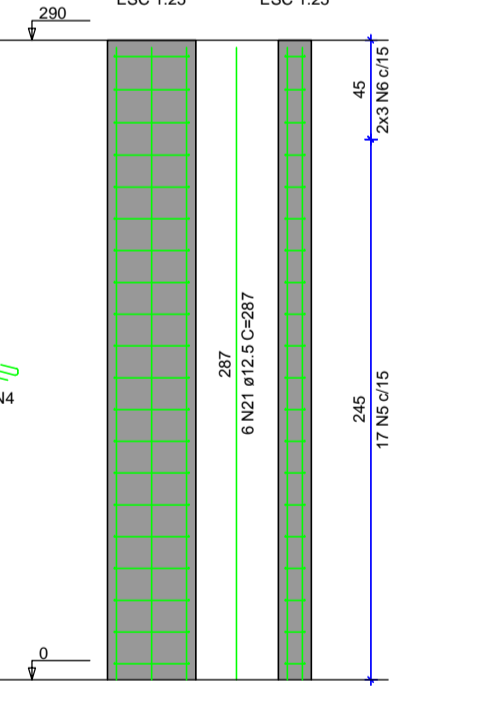
P21



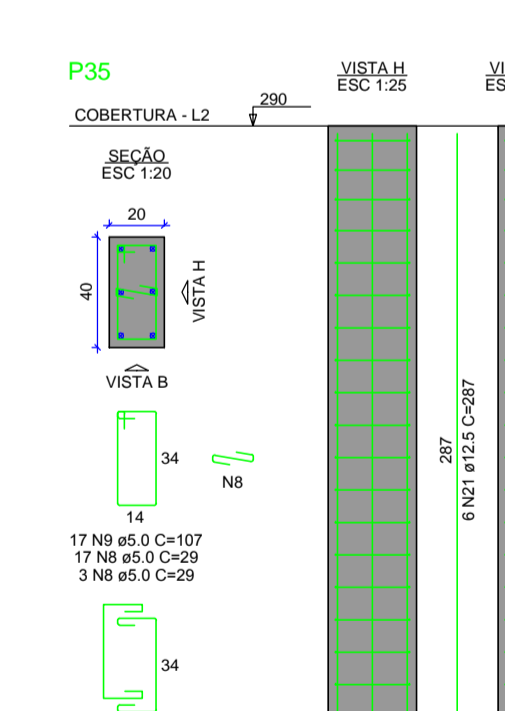
P22



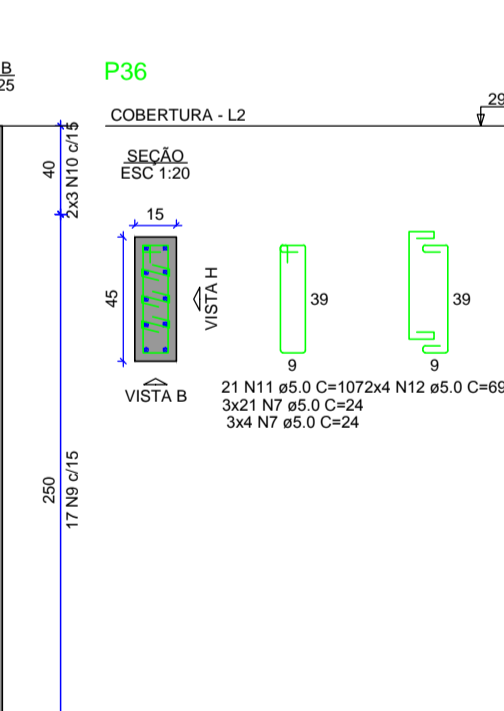
P24



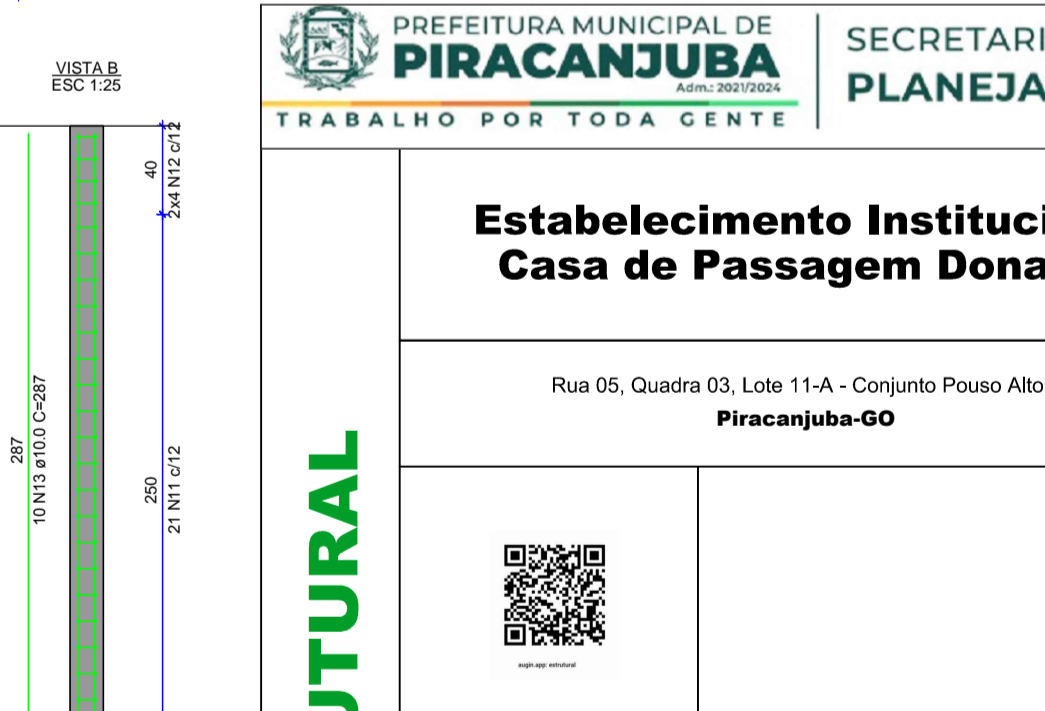
P25



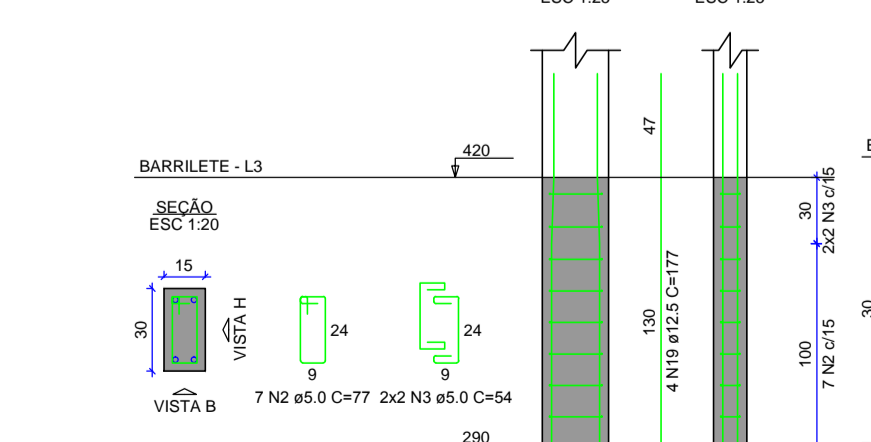
P35



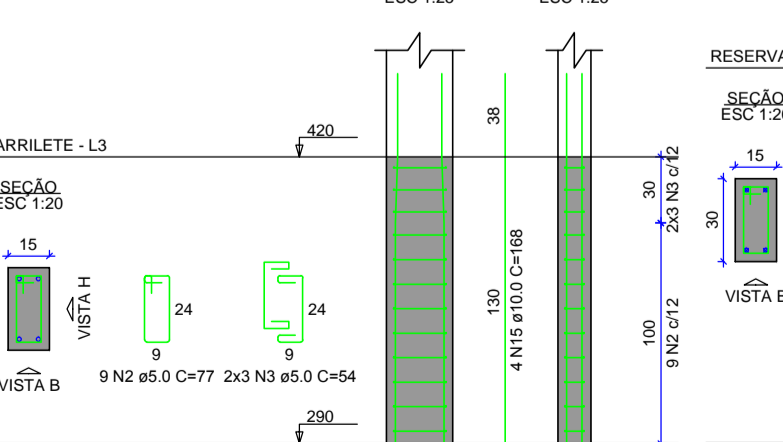
P36



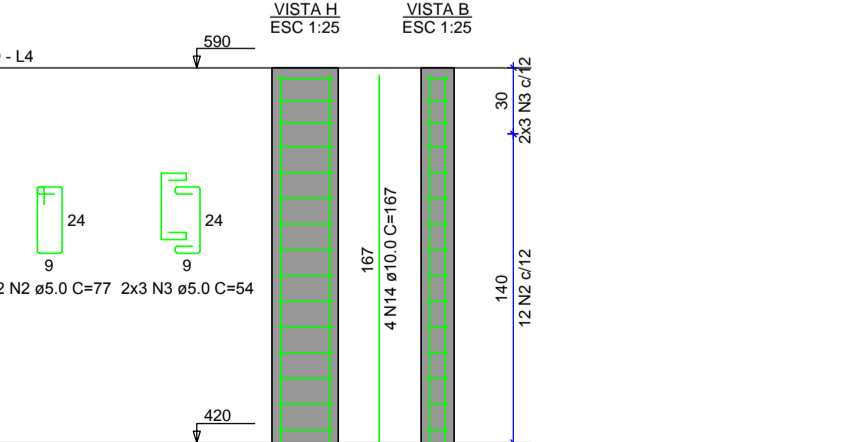
P23=P27



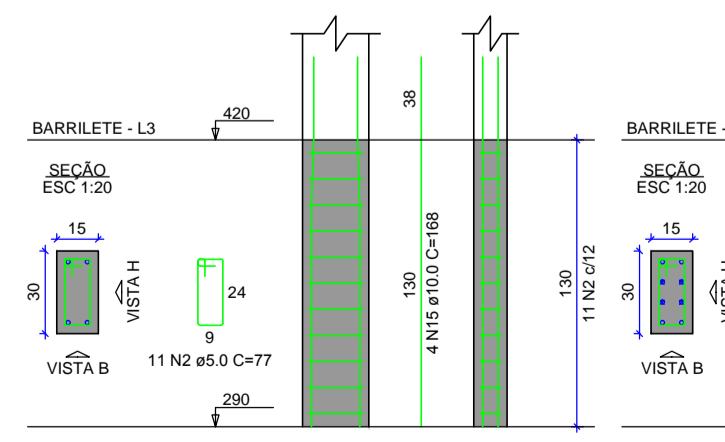
P28



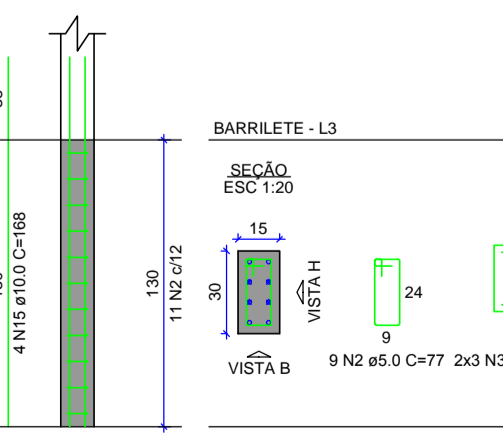
P21=P22=P23=P26=P27=P28



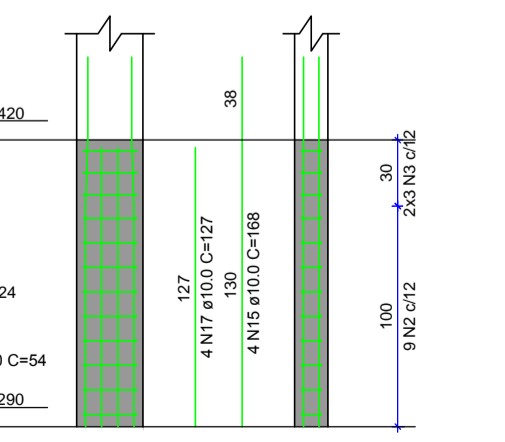
P21=P26



P22



P23

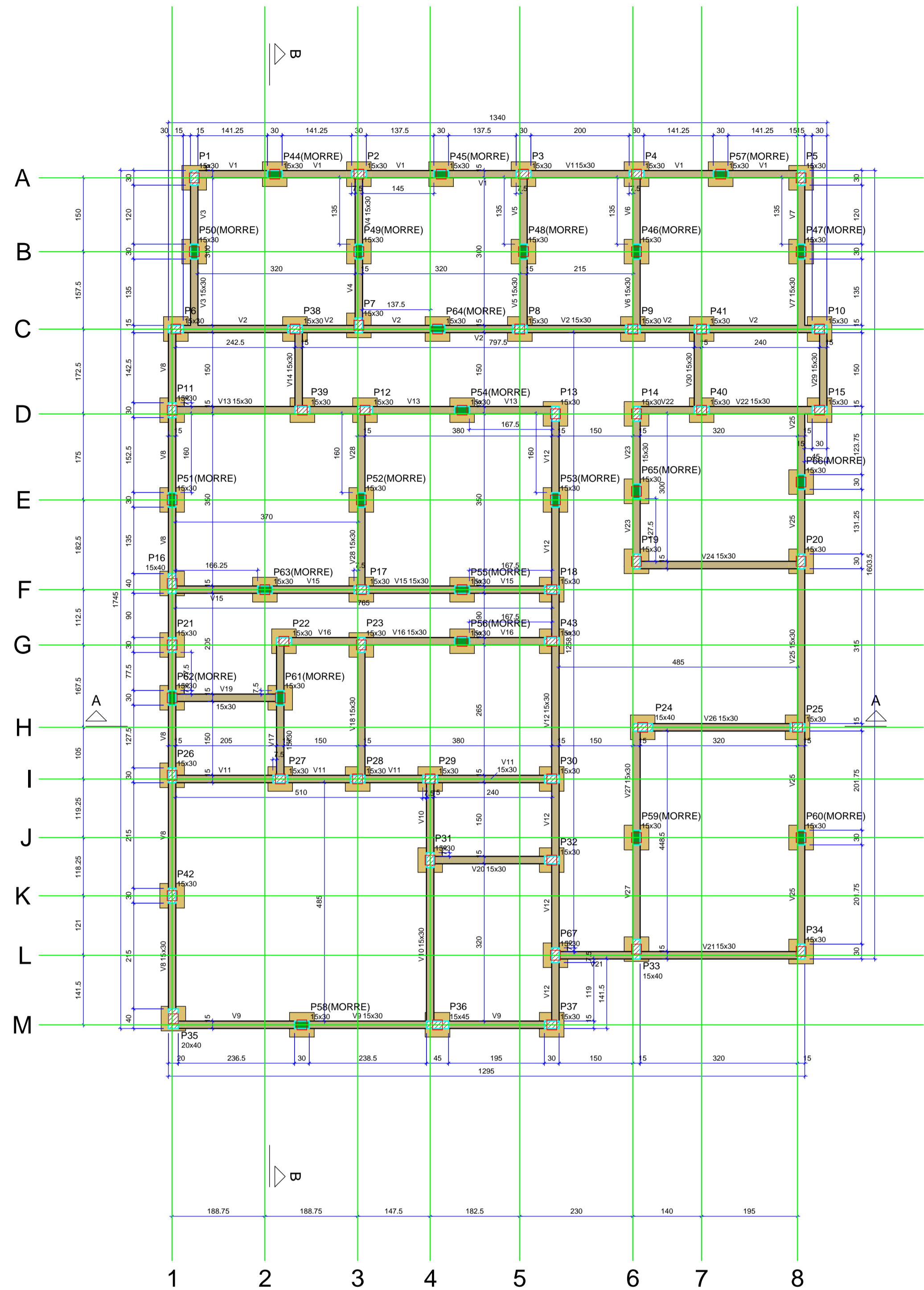


P24



RELAÇÃO DO AÇO

AÇO	N	DIAM (mm)	QUANT	C.UNIT (cm)	C.TOTAL (cm)
P19-L2	1	10.0	265.3	25	6632.5
2xP21-L3	1	12.5	12.5	7	87.5
P21-L2	1	12.5	12.5	7	87.5
P21-L3	1	12.5	12.5	7	87.5
P24-L2	1	16.0	17.2	2	34.4
P24-L3	1	16.0	17.2	2	34.4
P33-L2	1	5.0	519	48	24912
6xP21-L4	1	10.0	265.3	25	6632.5
P22-L3	1	12.5	12.5	7	87.5
P23-L2	1	12.5	12.5	7	87.5
2xP26-L2	1	10.0	265.3	25	6632.5
4xP30-L2	1	10.0	265.3	25	6632.5
P36-L2	1	10.0	265.3	25	6632.5
P36-L3	1	10.0	265.3	25	6632.5
P36-L4	1	10.0	265.3	25	6632.5
P36-L5	1	10.0	265.3	25	6632.5
P36-L6	1	10.0	265.3	25	6632.5
P36-L7	1	10.0	265.3	25	6632.5
P36-L8	1	10.0	265.3	25	6632.5
P36-L9	1	10.0	265.3	25	6632.5
P36-L10	1	10.0	265.3	25	6632.5
P36-L11	1	10.0	265.3	25	6632.5
P36-L12	1	10.0	265.3	25	6632.5
P36-L13	1	10.0	265.3	25	6632.5
P36-L14	1	10.0	265.3	25	6632.5
P36-L15	1	10.0	265.3	25	6632.5
P36-L16	1	10.0	265.3	25	6632.5
P36-L17	1	10.0	265.3	25	6632.5
P36-L18	1	10.0	265.3	25	6632.5
P36-L19	1	10.0	265.3	25	6632.5
P36-L20	1	10.0	265.3	25	6632.5
P36-L21	1	10.0	265.3	25	6632.5
P36-L22	1	10.0	265.3	25	6632.5
P36-L23	1	10.0	265.3	25	6632.5
P36-L24	1	10.0	265.3	25	6632.5
P36-L25	1	10.0	265.3	25	6632.5
P36-L26	1	10.0	265.3	25	6632.5
P36-L27	1	10.0	265.3	25	6632.5
P36-L28	1	10.0	265.3	25	6632.5
P36-L29	1	10.0	265.3	25	6632.5
P36-L30	1	10.0	265.3	25	6632.5
P36-L31	1	10.0	265.3	25	6632.5
P36-L32	1	10.0	265.3	25	6632.5
P36-L33	1	10.0	265.3	25	6632.5
P36-L34	1	10.0	265.3	25	6632.5
P36-L35	1	10.0	265.3	25	6632.5
P36-L36	1	10.0	265.3	25	6632.5
P36-L37	1	10.0	265.3	25	6632.5
P36-L38	1	10.0	265.3	25	6632.5
P36-L39	1	10.0	265.3	25	6632.5
P36-L40	1	10.0	265.3	25	6632.5
P36-L41	1	10.0	265.3	25	6632.5
P36-L42	1	10.0	265.3	25	6632.5
P36-L43	1	10.0	265.3	25	6632.5
P36-L44	1	10.0	265.3	25	6632.5
P36-L45	1	10.0	265.3	25	6632.5
P36-L46	1	10.0	265.3	25	6632.5
P36-L47	1	10.0	265.3	25	6632.5
P36-L48	1	10.0	265.3	25	6632.5
P36-L49	1	10.0	265.3	25	6632.5
P36-L50	1	10.0	265.3	25	6632.5
P36-L51	1	10.0	265.3	25	6632.5
P36-L52	1	10.0	265.3	25	6632.5
P36-L53	1	10.0	265.3	25	6632.5
P36-L54	1	10.0	265.3	25	6632.5
P36-L55	1	10.0	265.3	25	6632.5
P36-L56	1	10.0	265.3	25	6632.5
P36-L57	1	10.0	265.3	25	6632.5
P36-L58	1	10.0	265.3	25	6632.5
P36-L59	1	10.0	265.3	25	6632.5
P36-L60	1	10.0	265.3	25	6632.5
P36-L61	1	10.0	265.3	25	6632.5
P36-L62	1	10.0	265.3	25	6632.5
P36-L63	1	10.0	265.3	25	6632.5
P36-L64	1	10.0	265.3	25	6632.5
P36-L65	1	10.0	265.3	25	6632.5
P36-L66	1	10.0	265.3	25	6632.5
P36-L67	1	10.0	265.3	25	6632.5
P36-L68	1	10.0	265.3	25	6632.5
P36-L69	1	10.0	265.3	25	6632.5
P36-L70	1	10.0	265.3	25	6632.5
P36-L71	1	10.0	265.3	25	6632.5
P36-L72	1	10.0	265.3	25	6632.5
P36-L73	1	10.0	265.3	25	6632.5
P36-L74	1	10.0	265.3	25	6632.5
P36-L75	1	10.0	265.3	25	6632.5
P36-L76	1	10.0	265.3	25	6632.5
P36-L77	1	10.0	265.3	25	6632.5
P36-L78	1	10.0	265.3	25	6632.5
P36-L79	1	10.0	265.3	25	6632.5
P36-L80	1	10.0	265.3	25	6632.5
P36-L81	1	10.0	265.3	25	6632.5
P36-L82	1	10.0	265.3	25	6632.5
P36-L83	1	10.0	265.3	25	6632.5
P36-L84	1	10.0	265.3	25	6632.5
P36-L85	1	10.0	265.3	25	6632.5
P36-L86	1	10.0	265.3		



Pilares			
Nome	Seção (cm)	Elevação (cm)	Nível (cm)
P1	15x30	0	0
P2	15x30	0	0
P3	15x30	0	0
P4	15x30	0	0
P5	15x30	0	0
P6	15x30	0	0
P7	15x30	0	0
P8	15x30	0	0
P9	15x30	0	0
P10	15x30	0	0
P11	15x30	0	0
P12	15x30	0	0
P13	15x30	0	0
P14	15x30	0	0
P15	15x30	0	0
P16	15x30	0	0
P17	15x30	0	0
P18	15x30	0	0
P19	15x30	0	0
P20	15x30	0	0
P21	15x30	0	0
P22	15x30	0	0
P23	15x30	0	0
P24	15x30	0	0
P25	15x30	0	0
P26	15x30	0	0
P27	15x30	0	0
P28	15x30	0	0
P29	15x30	0	0
P30	15x30	0	0
P31	15x30	0	0
P32	15x30	0	0
P33	15x40	0	0
P34	15x30	0	0
P35	20x40	0	0
P36	15x45	0	0
P37	15x30	0	0
P38	15x30	0	0
P39	15x30	0	0
P40	15x30	0	0
P41	15x30	0	0
P42	15x30	0	0
P43	15x30	0	0
P44	15x30	0	0
P45	15x30	0	0
P46	15x30	0	0
P47	15x30	0	0
P48	15x30	0	0
P49	15x30	0	0
P50	15x30	0	0
P51	15x30	0	0
P52	15x30	0	0
P53	15x30	0	0
P54	15x30	0	0
P55	15x30	0	0
P56	15x30	0	0
P57	15x30	0	0
P58	15x30	0	0
P59	15x30	0	0
P60	15x30	0	0
P61	15x30	0	0
P62	15x30	0	0
P63	15x30	0	0
P64	15x30	0	0
P65	15x30	0	0
P66	15x30	0	0
P67	15x30	0	0

Vigas			
Nome	Seção (cm)	Elevação (cm)	Nível (cm)
V1	15x30	0	0
V2	15x30	0	0
V3	15x30	0	0
V4	15x30	0	0
V5	15x30	0	0
V6	15x30	0	0
V7	15x30	0	0
V8	15x30	0	0
V9	15x30	0	0
V10	15x30	0	0
V11	15x30	0	0
V12	15x30	0	0
V13	15x30	0	0
V14	15x30	0	0
V15	15x30	0	0
V16	15x30	0	0
V17	15x30	0	0
V18	15x30	0	0
V19	15x30	0	0
V20	15x30	0	0
V21	15x30	0	0
V22	15x30	0	0
V23	15x30	0	0
V24	15x30	0	0
V25	15x30	0	0
V26	15x30	0	0
V27	15x30	0	0
V28	15x30	0	0
V29	15x30	0	0
V30	15x30	0	0

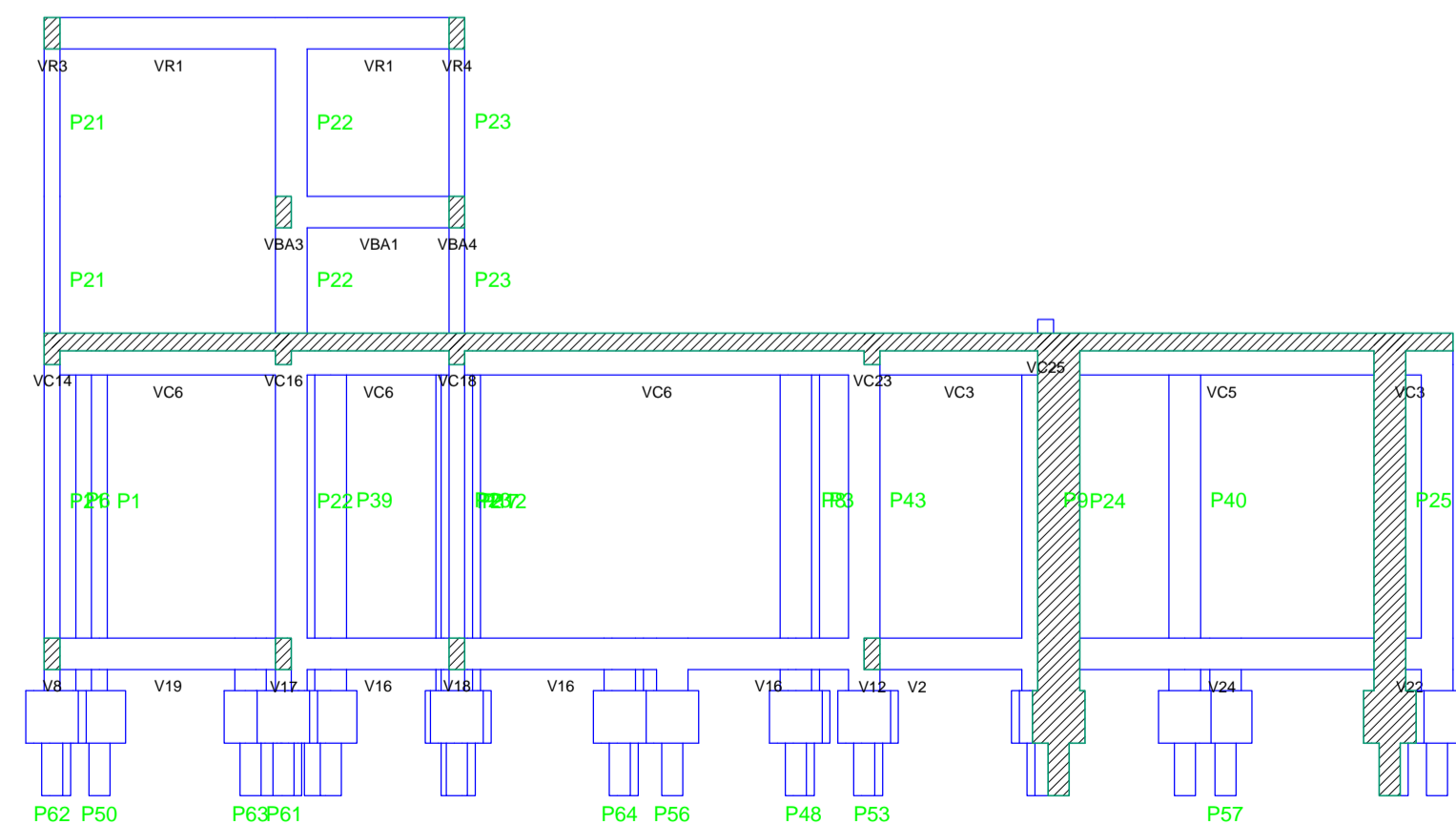
Características dos materiais			
fk	Ecs	Abatimento	
250	241500	5,00	

Dimensão máxima do agregado = 19 mm

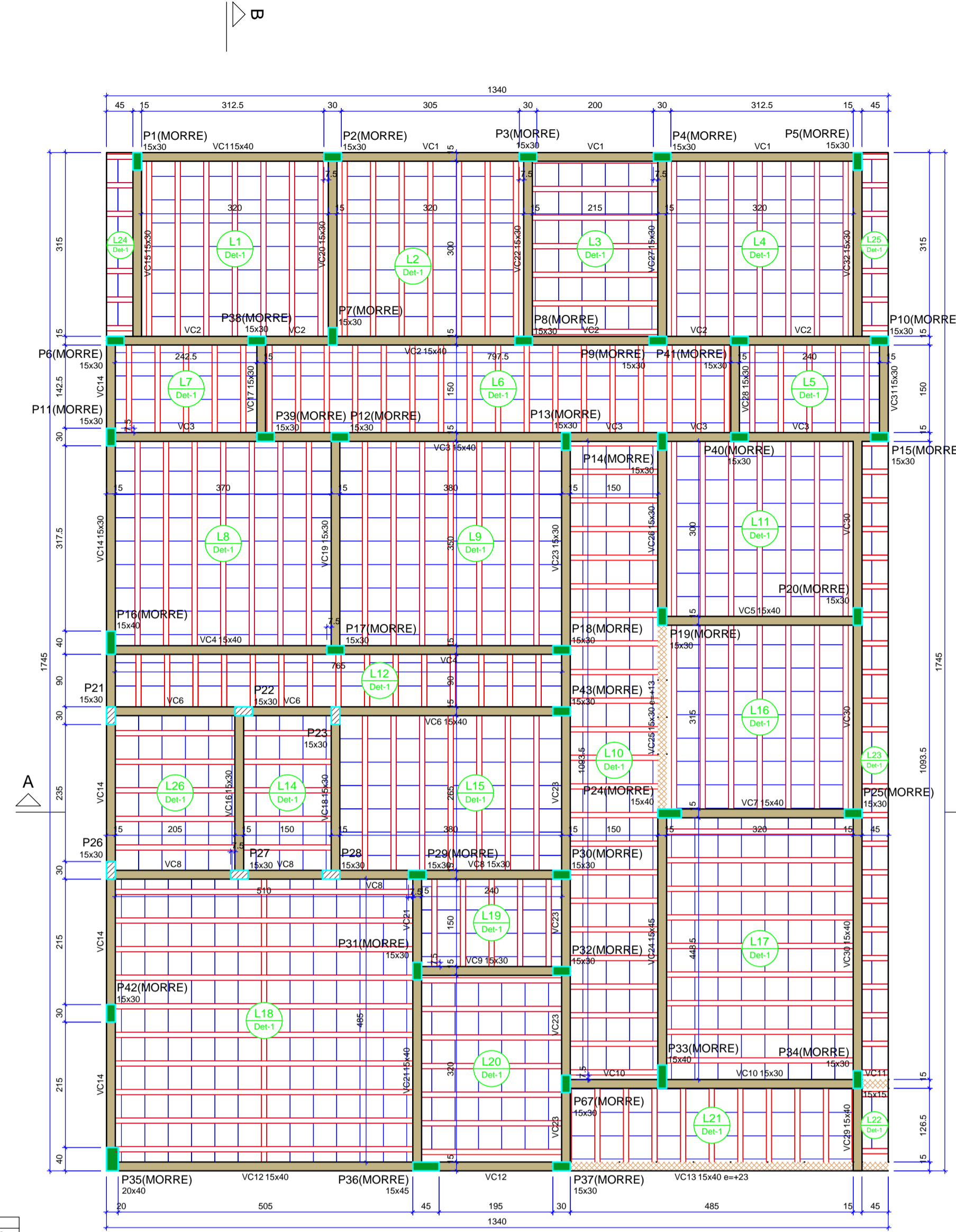
Legenda dos pilares		
	Pilar que morre	
	Pilar que passa	

Legenda das vigas e paredes		
	Viga	

Forma do pavimento Térreo (Nível 0) escala 1:50



Corte A-A escala 1:50



Forma do pavimento Cobertura (Nível 290) escala 1:50

Corte B-B escala 1:50

Vigas			
Nome	Seção (cm)	Elevação (cm)	Nível (cm)
VR1	15x30	0	590
VR2	15x30	0	590
VR3	15x30	0	590
VR4	15x30	0	590

Características dos materiais			
fk	Ecs	Abatimento	
250	241500	5,00	

Dimensão máxima do agregado = 19 mm

Pilares			
Nome	Seção (cm)	Elevação (cm)	Nível (cm)
P21	15x30	0	590
P22	15x30	0	590
P23	15x30	0	590
P24	15x30	0	590
P25	15x30	0	590
P26	15x30	0	590
P27	15x30	0	590
P28	15x30	0	590

Legenda dos pilares			Legenda das vigas e paredes		
	Pilar que morre			Viga	

Vigas			
Nome	Seção (cm)	Elevação (cm)	Nível (cm)
VC1	15x40	0	290
VC2	15x40	0	290
VC3	15x40	0	290
VC4	15x40	0	290
VC5	15x40	0	290
VC6	15x40	0	290
VC7	15x40	0	290
VC8	15x40	0	290
VC9	15x30	0	290
VC10	15x30	0	290
VC11	15x15	23	313
VC12	15x40	0	290
VC13	15x40	0	290
VC14	15x30	0	290
VC15	15x30	0	290
VC16	15x30	0	290
VC17	15x30	0	290
VC18	15x30	0	290
VC19	15x30	0	290
VC20	15x30	0	290
VC21	15x40	0	290
VC22	15x30	0	290
VC23	15x30	0	290
VC24	15x45	0	290
VC25	15x30	13	303
VC26	15x30	0	290
VC27	15x30	0	290
VC28	15x30	0	290
VC29	15x30	0	290
VC30	15x40	0	290
VC31	15x30	0	290
VC32	15x30	0	290

Pilares			
Nome	Seção (cm)	Elevação (cm)	Nível (cm)
P1	15x30	0	290
P2	15x30	0	290
P3	15x30	0	290
P4	15x30	0	290
P5	15x30	0	290
P6	15x30	0	290
P7	15x30	0	290
P8	15x30	0	290
P9	15x30	0	290
P10	15x30	0	290
P11	15x30	0	290
P12	15x30	0	290
P13	15x30	0	290
P14	15x30	0	290
P15	15x30	0	290
P16	15x30	0	290
P17	15x30	0	290
P18	15x30	0	290
P19	15x30	0	290
P20	15x30	0	290
P21	15x30	0	290
P22	15x30	0	290
P23	15x30	0	290
P24	15x30	0	290
P25	15x30	0	290
P26	15x30	0	290
P27	15x30	0	290
P28	15x30	0	290
P29	15x30	0	290
P30	15x30	0	290
P31	15x30	0	290
P32	15x30	0	290
P33	15x40	0	290
P34	15x30	0	290
P35	20x40	0	290
P36	15x45	0	290
P37	15x30	0	290
P38	15x30	0	290
P39	15x30	0	290
P40	15x30	0	290
P41	15x30	0	290
P42	15x30	0	290
P43	15x30	0	290
P44	15x30	0	290
P45	15x30	0	290
P46	15x30	0	290
P47	15x30	0	290
P48	15x30	0	290
P49	15x30	0	290
P50	15x30	0	290
P51	15x30	0	290
P52	15x30	0	290
P53	15x30	0	290
P54	15x30	0	290
P55	15x30	0	290
P56	15x30	0	290
P57	15x30	0	290
P58	15x30	0	290

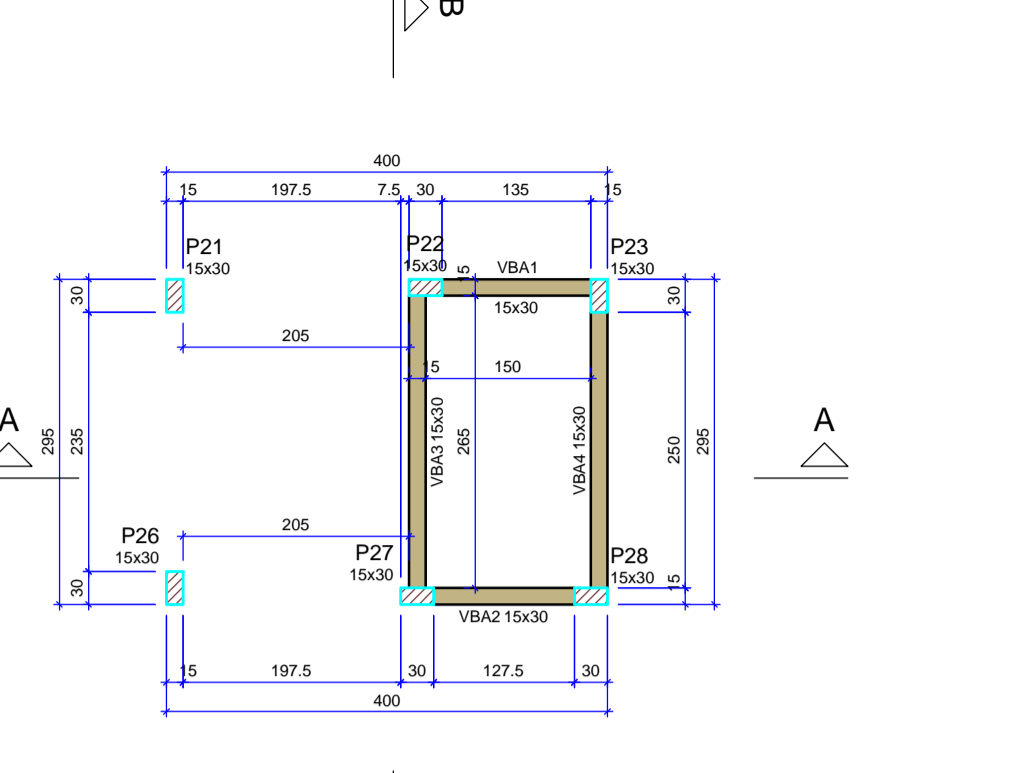
Área de lajes			
Tipo	Altura (cm)	Bloco de Enchimento	Área (m²)
Treliçada TD	17	B12/40/40	207,97

Características dos materiais			
fk	Ecs	Abatimento	
250	241500	5,00	

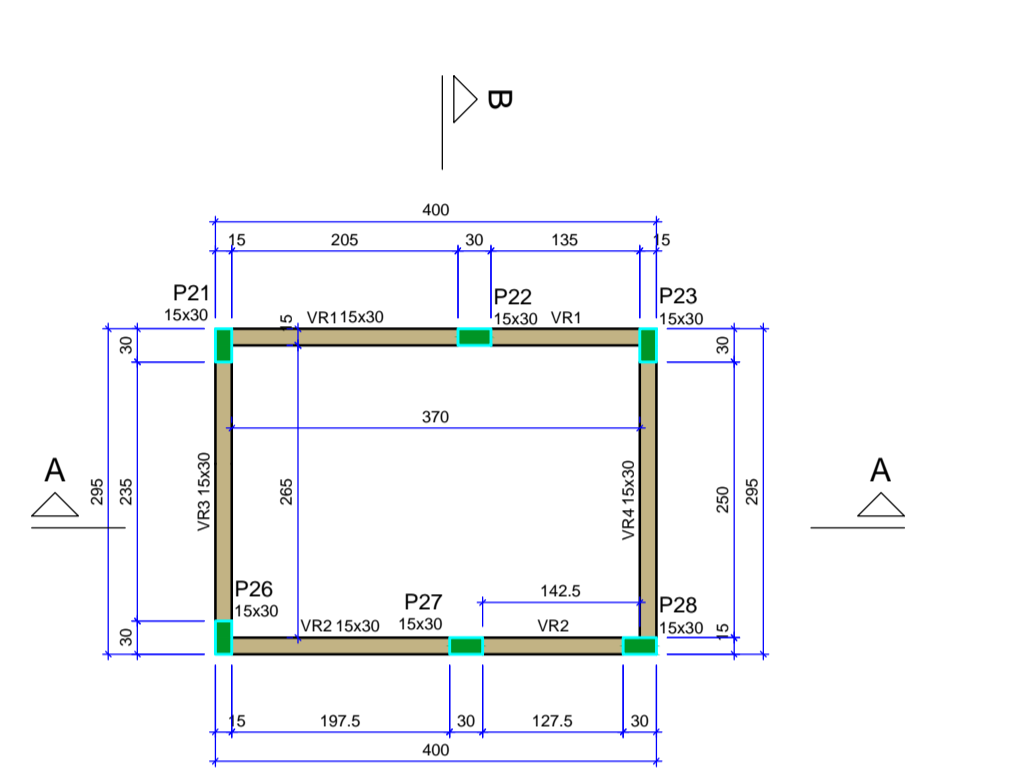
Dimensão máxima do agregado = 19 mm

Legenda dos pilares		
	Pilar que morre	
	Pilar que passa	

Legenda das vigas e paredes		
	Viga	
	Viga chata ou invertida	



Forma do pavimento Barrilete (Nível 420) escala 1:50



Forma do pavimento Reservatório (Nível 590) escala 1:50

Vigas			
Nome	Seção (cm)	Elevação (cm)	Nível (cm)
VBA1	15x30	0	420
VBA2	15x30	0	420
VBA3	15x30	0	420
VBA4	15x30	0	420

Características dos materiais			
fk	Ecs	Abatimento	
250	241500	5,00	

Dimensão máxima do agregado = 19 mm

Legenda das vigas e paredes		
	Viga	

Legenda dos pilares		
	Pilar que passa	

Estabelecimento Institucional Casa de Passagem Dona Lia

Rua 05, Quadra 03, Lote 11-A - Conjunto Pouso Alto Piracanjuba-GO



Via o projeto em Plataforma Aumentada Base o App Augment Reality

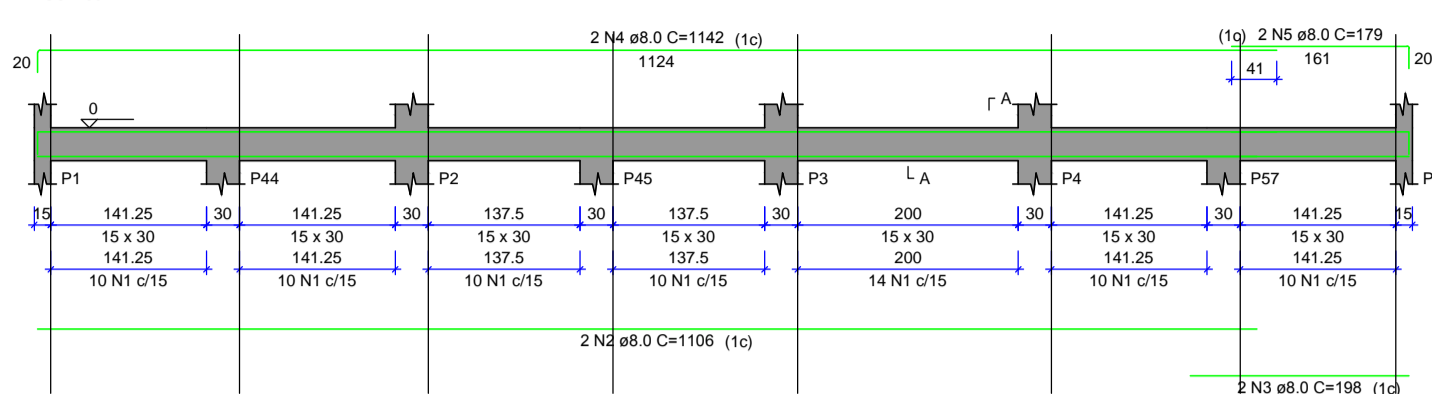
Proprietário: Prefeitura Municipal de Piracanjuba CNPJ 01.179.647/0001-95

Projeto e Responsável Técnico: José Wellington Silva Moreira Engenheiro Civil CREA 51810-04

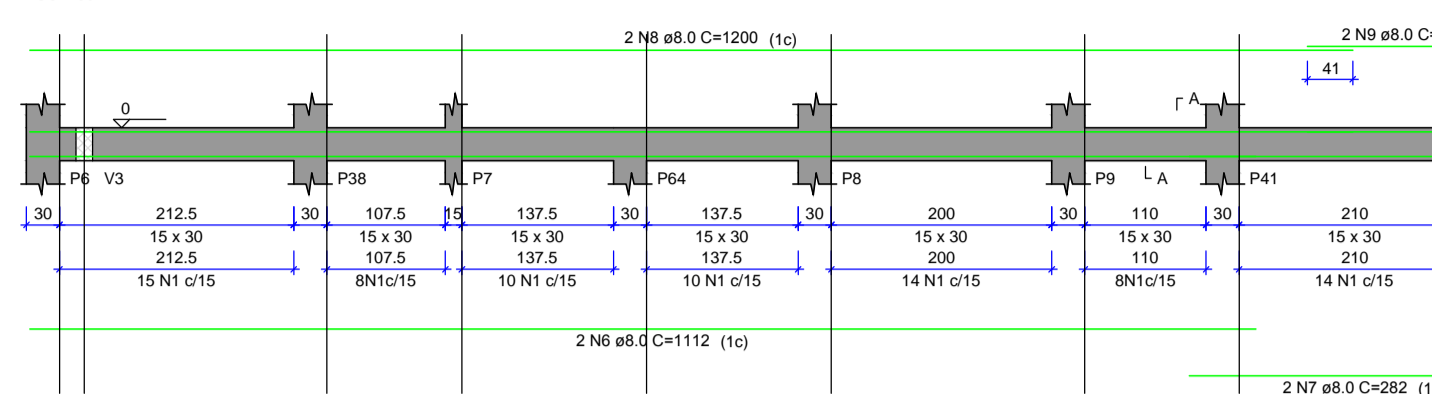
Condição: Formas de Pavimento Térreo Formas de Pavimento de Cobertura Formas de Pavimento Reservatório Detalhes em Corte

NBR - 6118 / 2014 ESPECIFICAÇÃO DE MATERIAIS: FIA - VER OBSERVAÇÕES E - VER OBSERVAÇÕES Revisão - 04, 04/04/2014 - AÇO CASO E CASO IMPORTANTE: 02/04/2014 - 14/05/2014 NBR - 6118 / 2014 EXECUÇÃO: DE ACORDO COM A NBR - 14931 / 2003

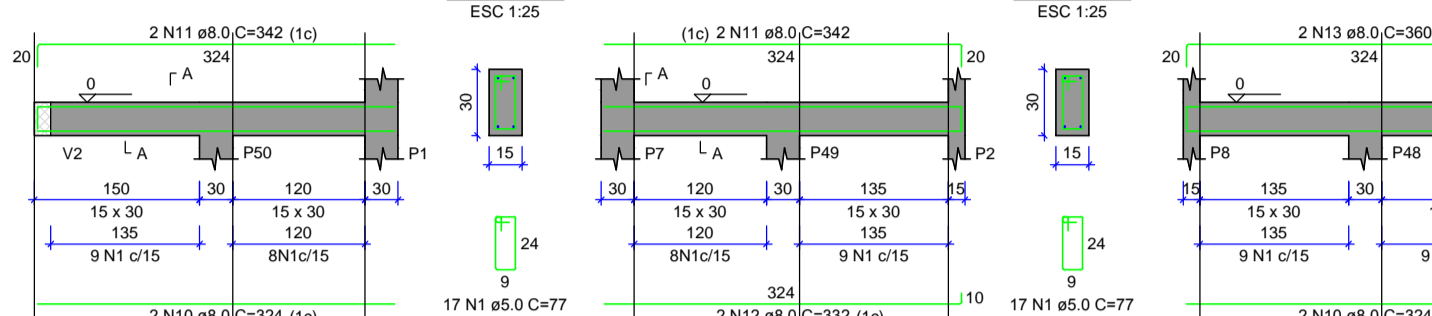
V1 (15 x 30)



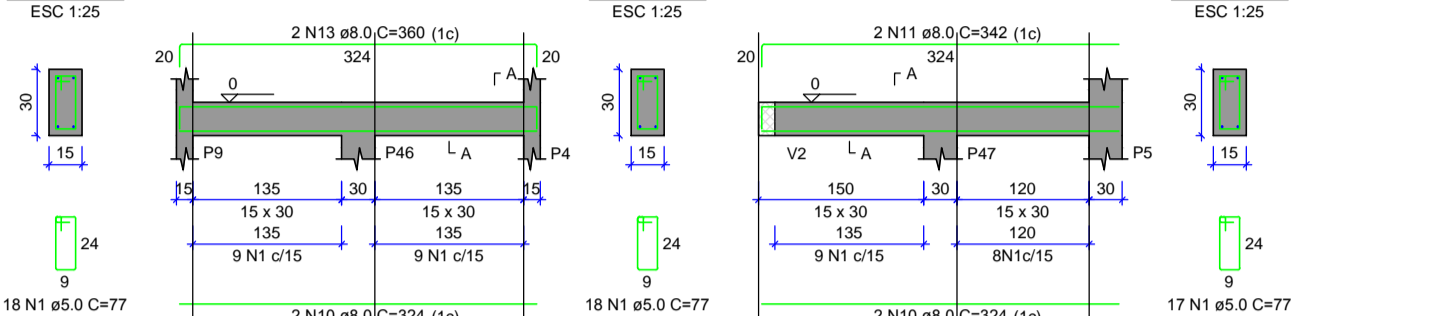
V2 (15 x 30)



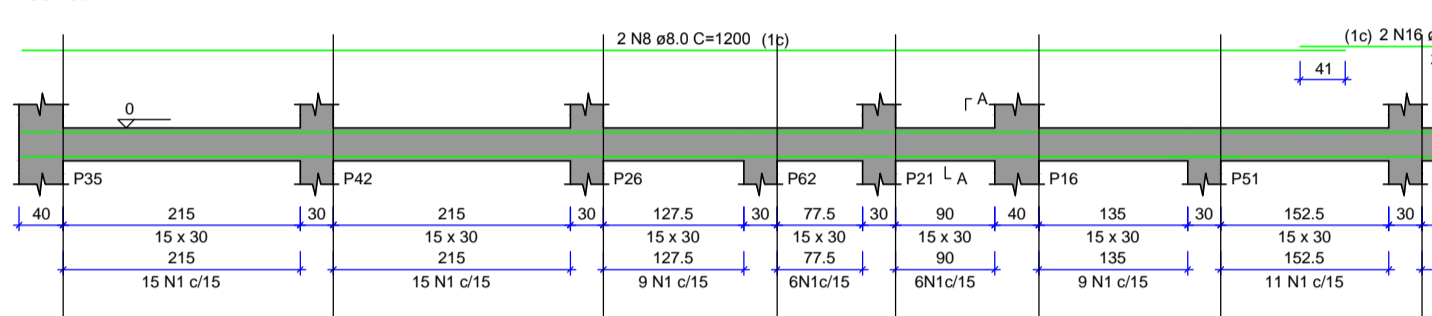
V3 (15 x 30)



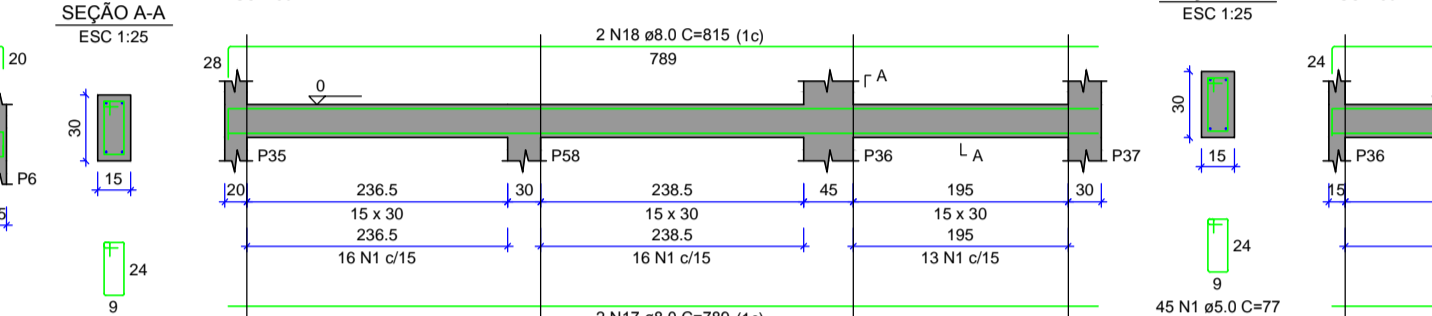
V4 (15 x 30)



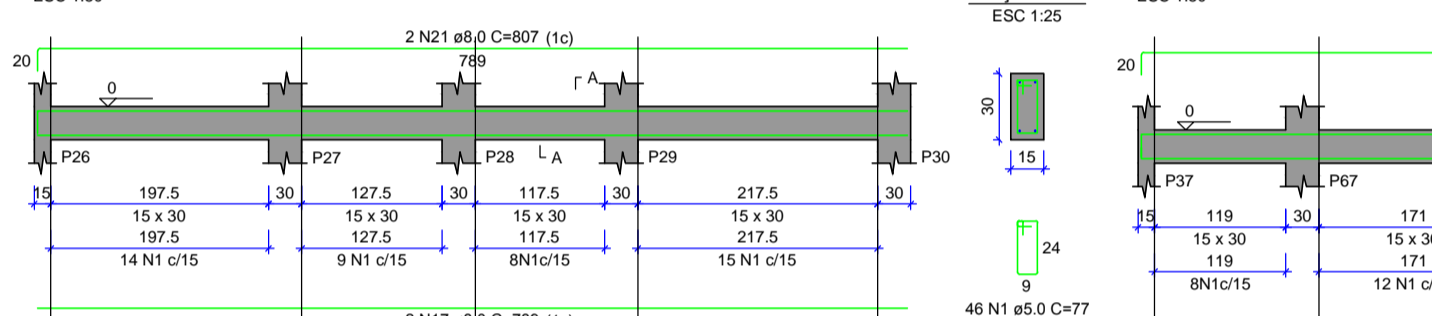
V8 (15 x 30)



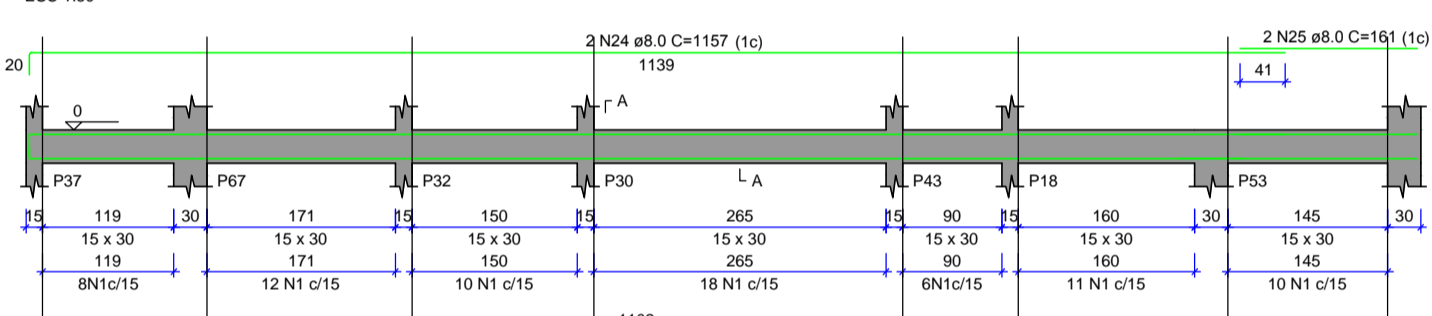
V9 (15 x 30)



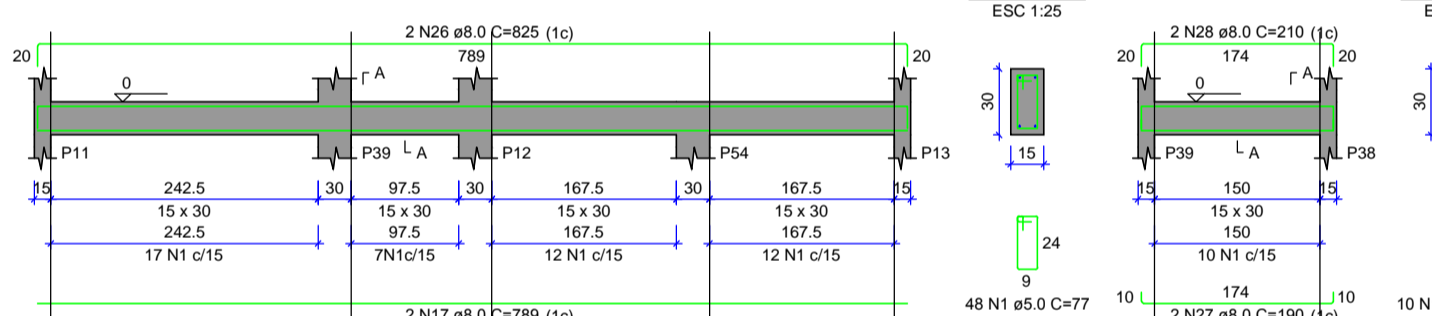
V11 (15 x 30)



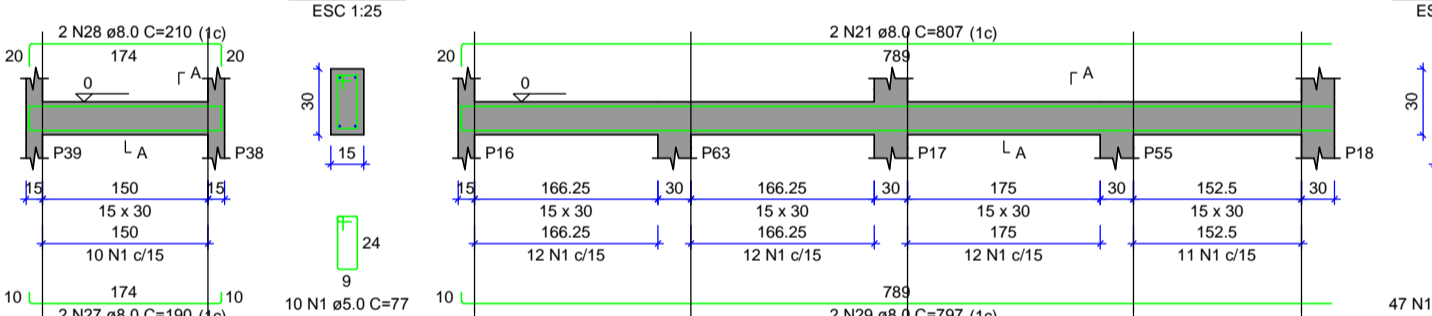
V12 (15 x 30)



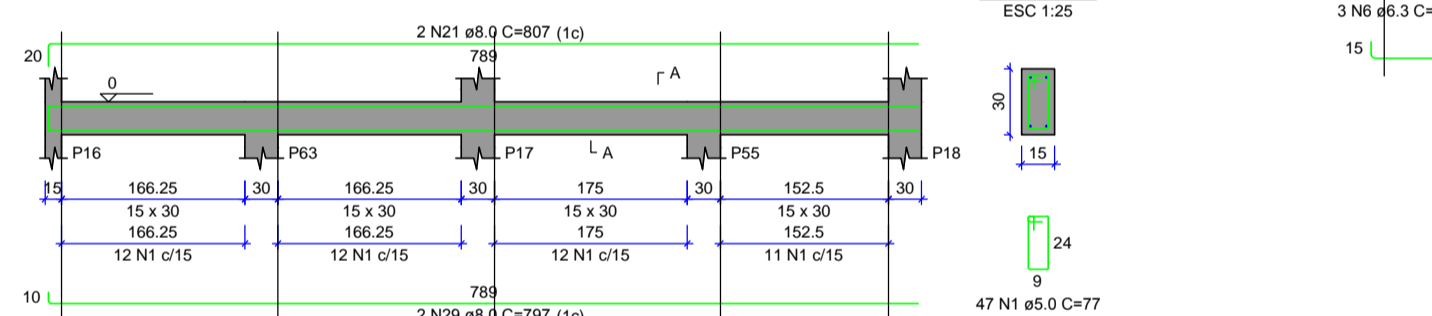
V13 (15 x 30)



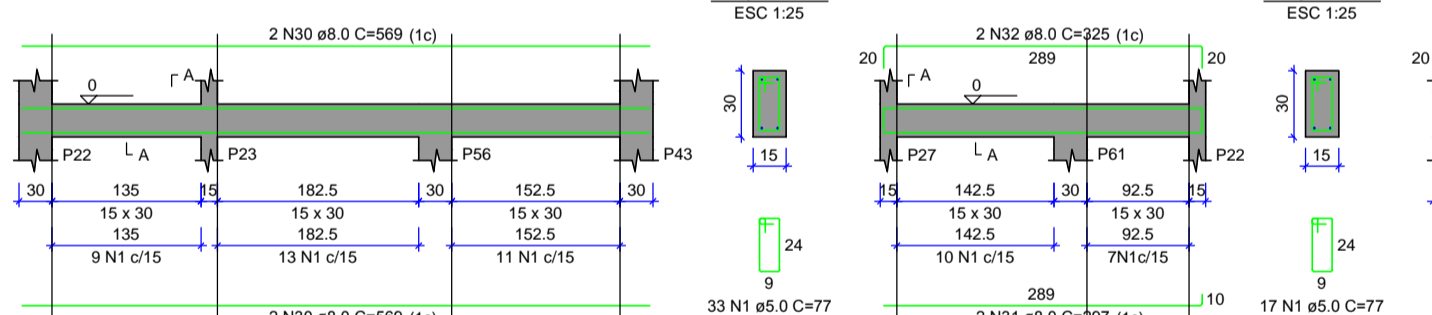
V14 (15 x 30)



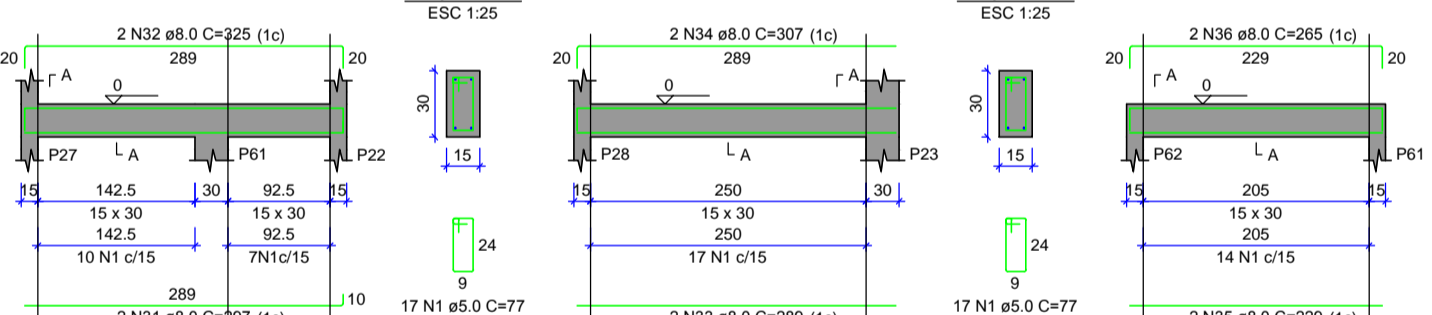
V15 (15 x 30)



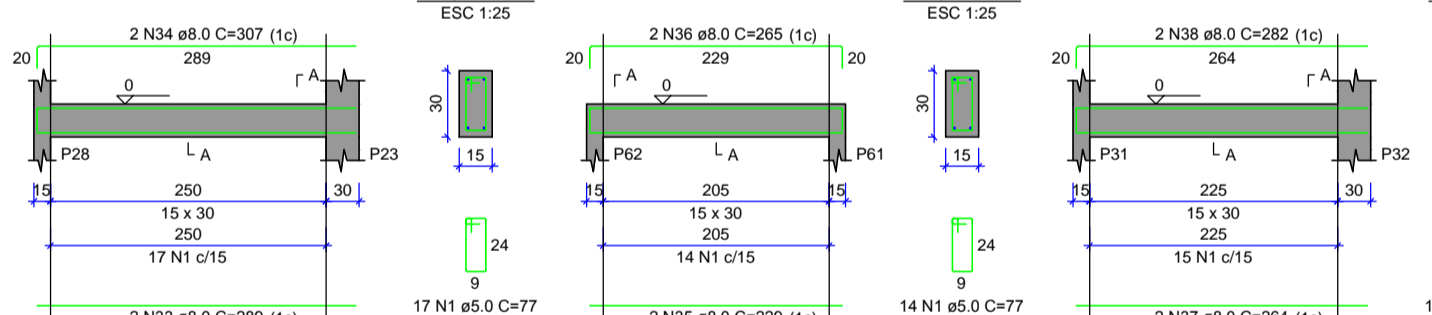
V16 (15 x 30)



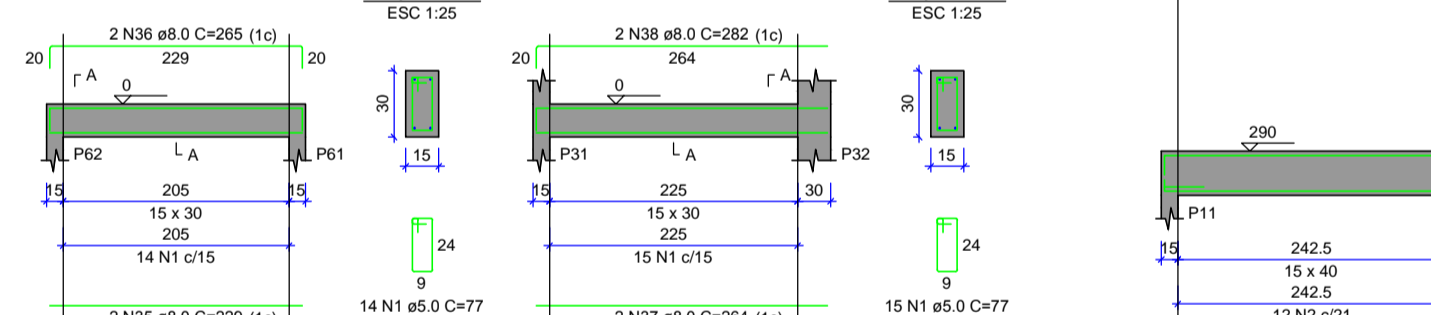
V17 (15 x 30)



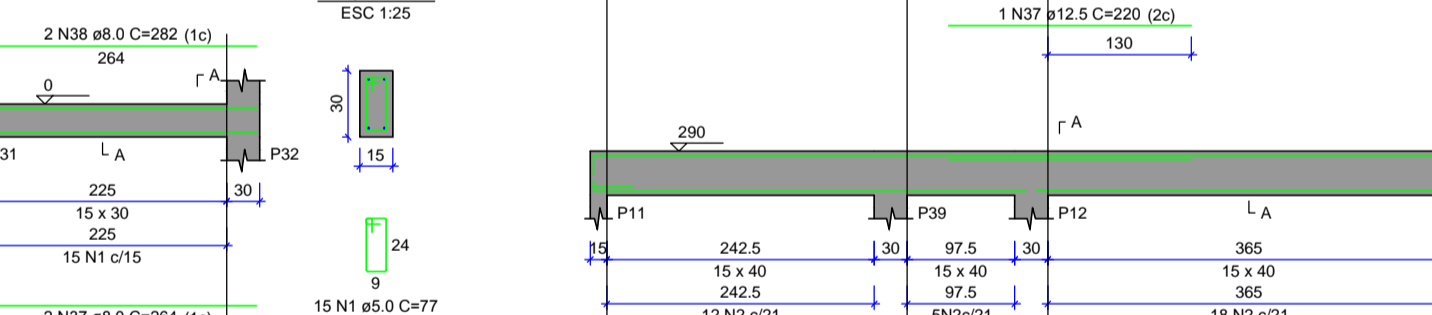
V18 (15 x 30)



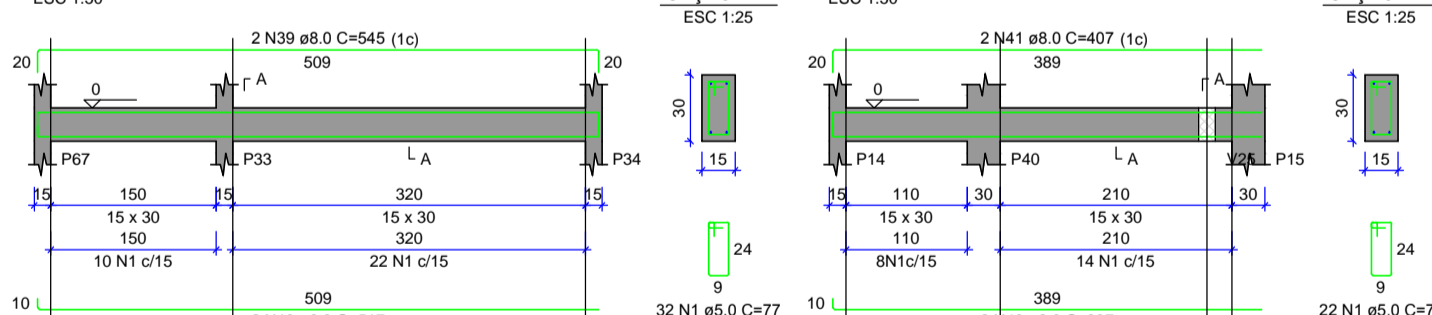
V19 (15 x 30)



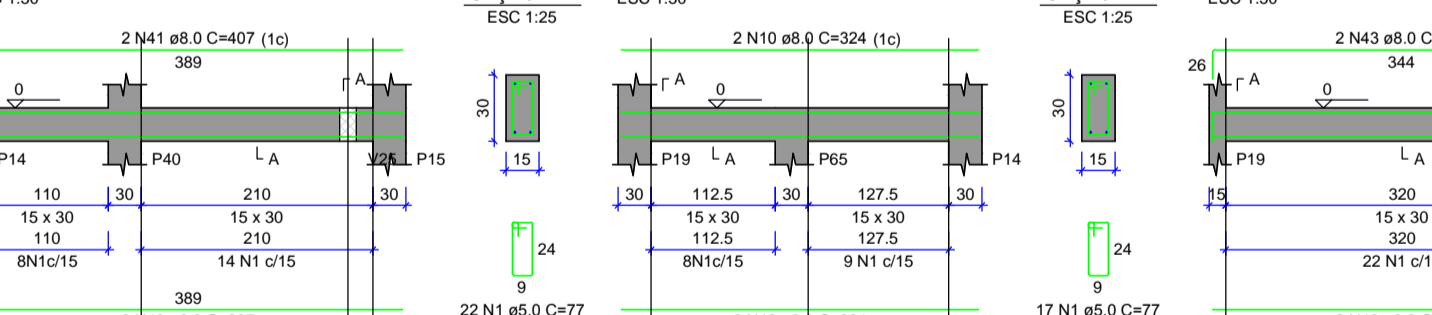
V20 (15 x 30)



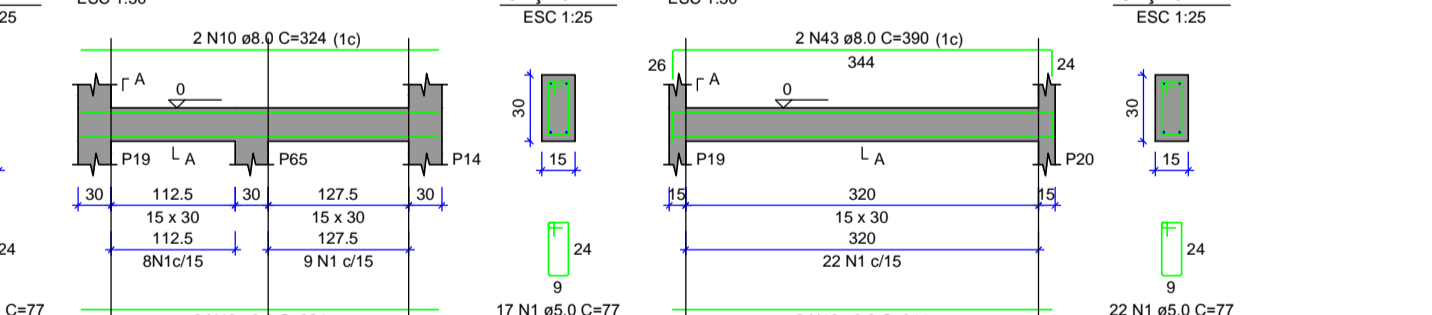
V21 (15 x 30)



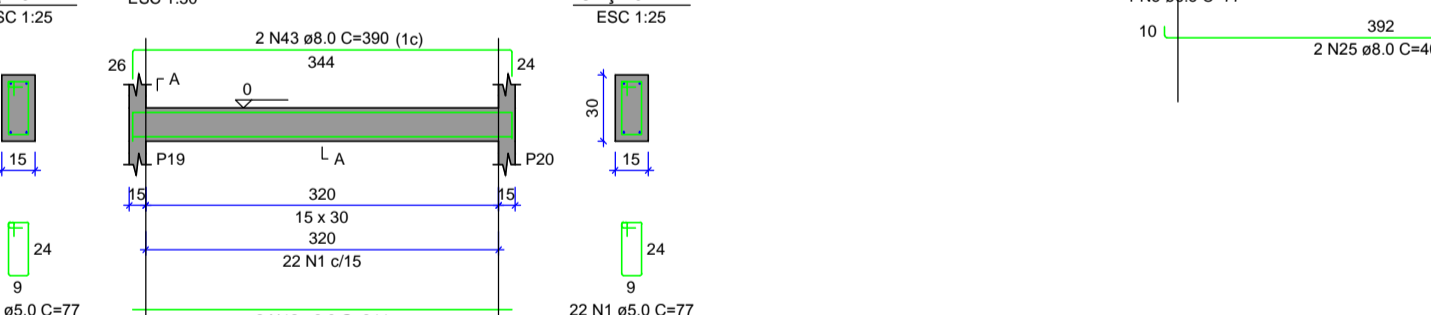
V22 (15 x 30)



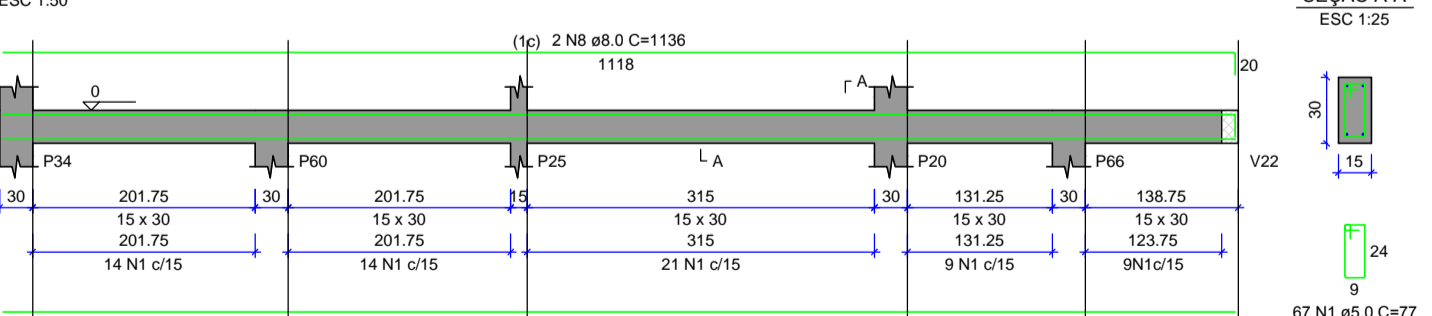
V23 (15 x 30)



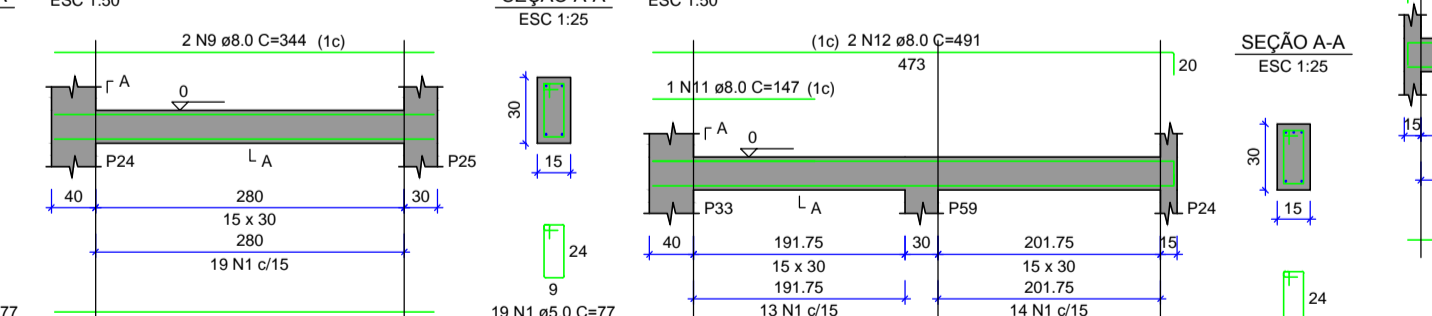
V24 (15 x 30)



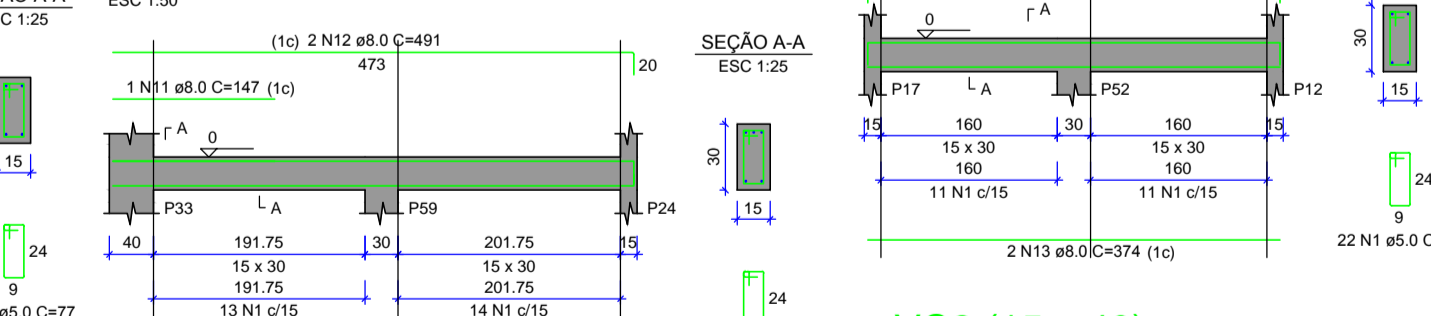
V25 (15 x 30)



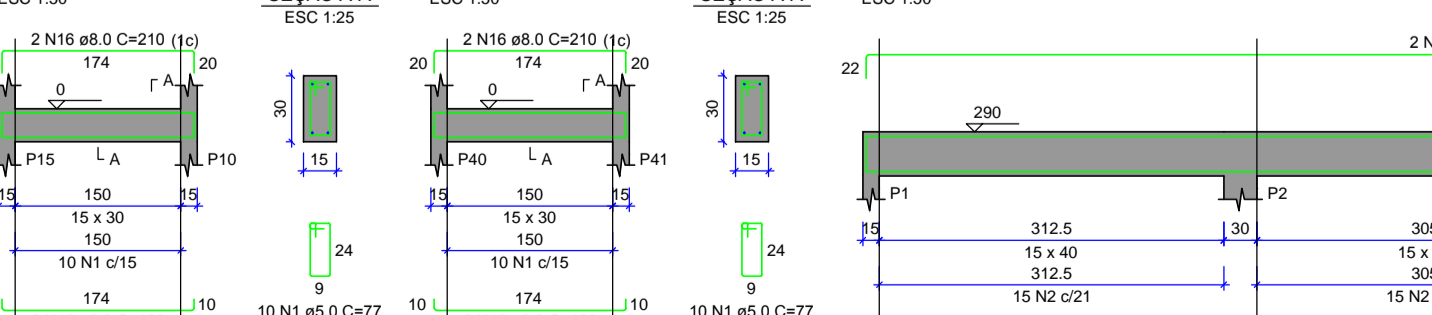
V26 (15 x 30)



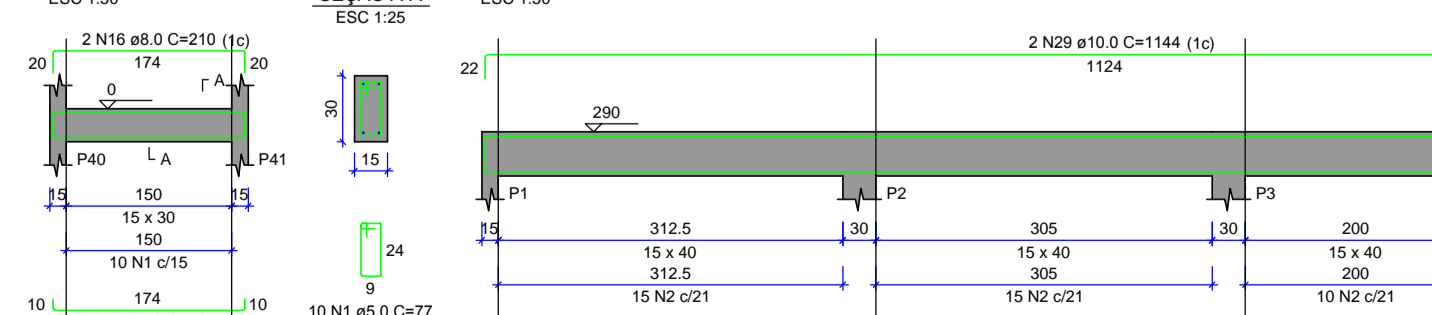
V27 (15 x 30)



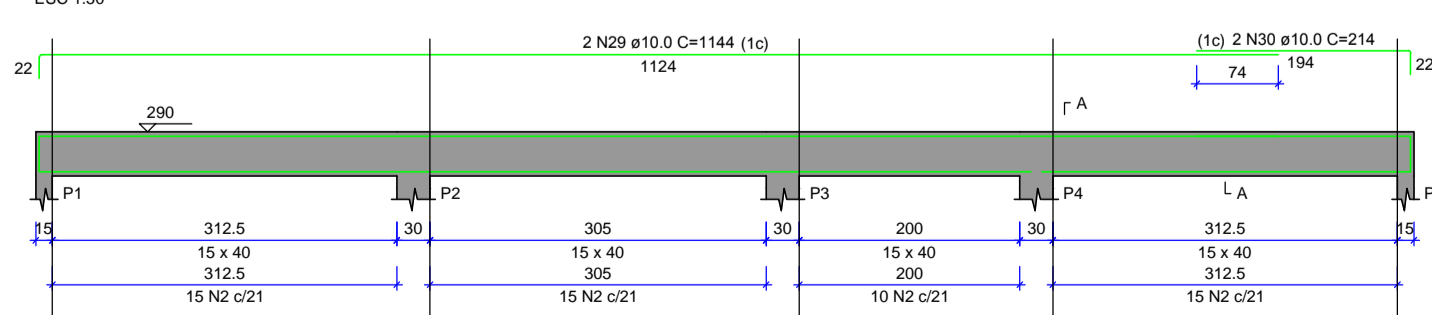
V29 (15 x 30)



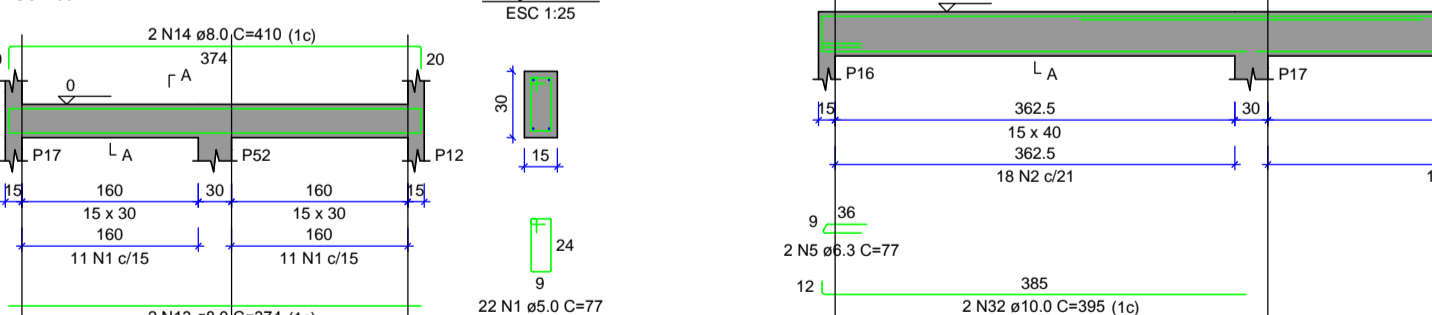
V30 (15 x 30)



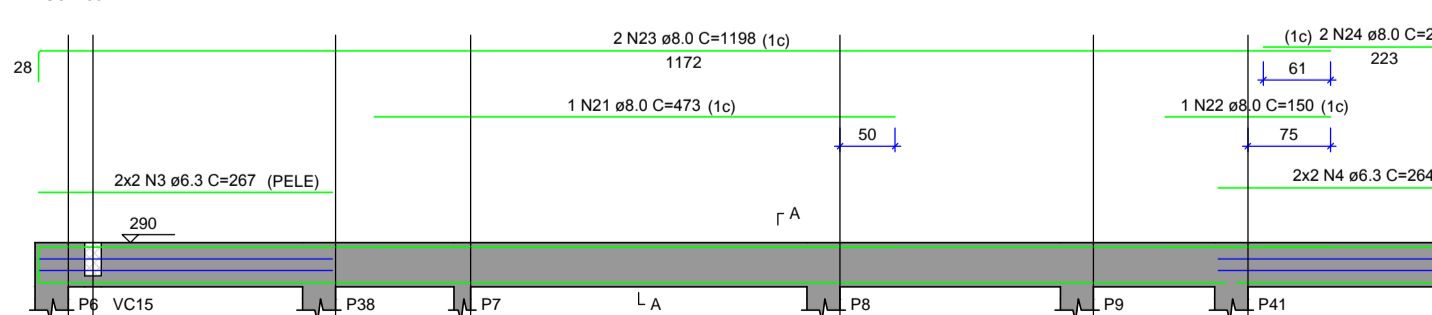
VC1 (15 x 40)



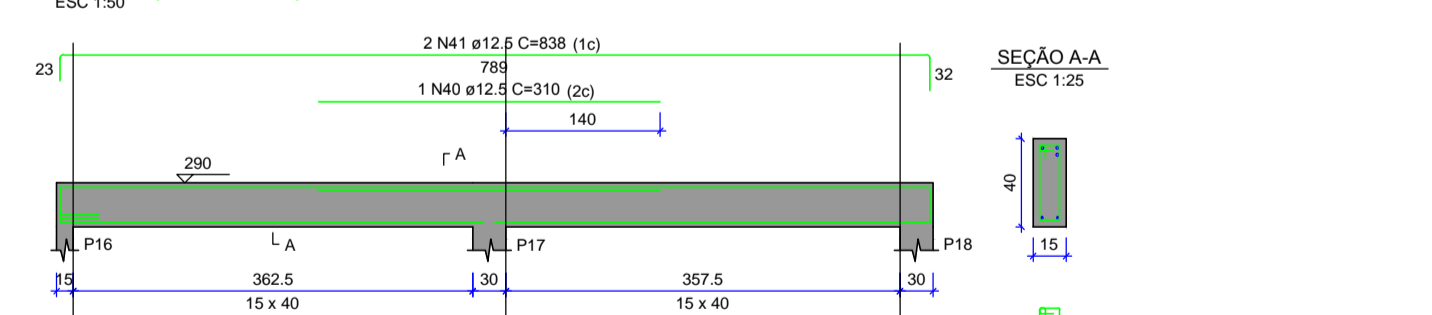
V28 (15 x 30)



VC2 (15 x 40)



VC4 (15 x 40)



RELAÇÃO DO AÇO

AÇO	N	DIAM (mm)	QUANT	C.UNIT (cm)	C.TOTAL (cm)
CA50	2	8.0	114	114.0	228.0
CA50	3	8.0	114	114.0	228.0
CA50	4	8.0	114	114.0	228.0
CA50	5	8.0	114	114.0	228.0
CA50	6	8.0	114	114.0	228.0
CA50	7	8.0	114	114.0	228.0
CA50	8	8.0	114	114.0	228.0
CA50	9	8.0	114	114.0	228.0
CA50	10	8.0	114	114.0	228.0
CA50	11	8.0	114	114.0	228.0
CA50	12	8.0	114	114.0	228.0
CA50	13	8.0	114	114.0	228.0
CA50	14	8.0	114	114.0	228.0
CA50	15	8.0	114	114.0	228.0
CA50	16	8.0	114	114.0	228.0
CA50	17	8.0	114	114.0	228.0
CA50	18	8.0	114	114.0	228.0
CA50	19	8.0	114	114.0	228.0
CA50	20	8.0	114	114.0	228.0
CA50	21	8.0	114	114.0	228.0
CA50	22	8.0	114	114.0	228.0
CA50	23	8.0	114	114.0	228.0
CA50	24	8.0	114	114.0	228.0
CA50	25	8.0	114	114.0	228.0
CA50	26	8.0	114	114.0	228.0
CA50	27	8.0	114	114.0	228.0
CA50	28	8.0	114	114.0	228.0
CA50	29	8.0	114	114.0	228.0
CA50	30	8.0	114	114.0	228.0
CA50	31	8.0	114	114.0	228.0
CA50	32	8.0	114	114.0	228.0
CA50	33	8.0	114	114.0	228.0
CA50	34	8.0	114	114.0	228.0
CA50	35	8.0	114	114.0	228.0
CA50	36	8.0	114	114.0	228.0
CA50	37	8.0	114	114.0	228.0
CA50	38	8.0	114	114.0	228.0
CA50	39	8.0	114	114.0	228.0
CA50	40	8.0	114	114.0	228.0
CA50	41	8.0	114	114.0	228.0
CA50	42	8.0	114	114.0	228.0
CA50	43	8.0	114	114.0	228.0
CA50	44	8.0	114	114.0	228.0
CA50	45	8.0	114	114.0	228.0
CA50	46	8.0	114	114.0	228.0
CA50	47	8.0	114	114.0	228.0
CA50	48	8.0	114	114.0	228.0
CA50	49	8.0	114	114.0	228.0
CA50	50	8.0	114	114.0	228.0
CA50	51	8.0	114	114.0	228.0
CA50	52	8.0	114	114.0	228.0
CA50	53	8.0	114	114.0	228.0
CA50	54	8.0	114	114.0	228.0
CA50	55	8.0	114	114.0	228.0
CA50	56	8.0	114	114.0	228.0
CA50	57	8.0	114	114.0	228.0
CA50	58	8.0	114	114.0	228.0
CA50	59	8.0	114	114.0	228.0
CA50	60	8.0	114	114.0	228.0
CA50	61	8.0	114	114.0	228.0
CA50	62	8.0	114	114.0	228.0
CA50	63	8.0	114	114.0	228.0
CA50	64	8.0	114	114.0	228.0
CA50	65	8.0	114	114.0	228.0
CA50	66	8.0	114	114.0	228.0
CA50	67	8.0	114	114.0	228.0
CA50	68	8.0	114	114.0	228.0
CA50	69	8.0	114	114.0	228.0
CA50	70	8.0	114	114.0	228.0
CA50	71	8.0	114	114.0	228.0
CA50	72	8.0	114	114.0	228.0
CA50	73	8.0	114	114.0	228.0
CA50	74	8.0	114	114.0	228.0
CA50	75	8.0	114	114.0	228.0
CA50	76	8.0	114	114.0	228.0
CA50	77	8.0	114	114.0	228.0
CA50	78	8.0	114	114.0	228.0
CA50	79	8.0	114	114.0	228.0
CA50	80	8.0	114	114.0	228.0
CA50	81	8.0	114	114.0	228.0
CA50	82	8.0	114	114.0	228.0
CA50	83	8.0	114	114.0	228.0
CA50	84	8.0	114	114.0	228.0
CA50	85	8.0	114	114.0	228.0
CA50	86	8.0	114	114.0	228.0
CA50	87	8.0	114	114.0	228.0
CA50	88	8.0	114	114.0	228.0
CA50	89	8.0	114	114.0	228.0
CA50	90	8.0	114	114.0	228.0
CA50	91	8.0	114	114.0	228.0
CA50	92	8.0	114	114.0	228.0
CA50	93	8.0	114	114.0	228.0
CA50	94	8.0	114	114.0	228.0
CA50	95	8.0	114	114.0	228.0
CA50	96	8.0	114	114.0	228.0
CA50	97	8.0	114	114.0	228.0
CA50	98	8.0	114	114.0	228.0
CA50	99	8.0	114	114.0	228.0
CA50	100	8.0	114	114.0	228.0

RESUMO DO AÇO

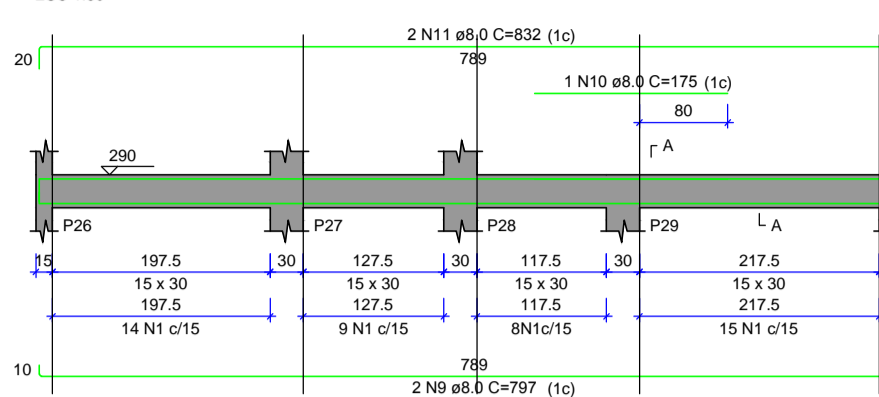
AÇO	DIAM (mm)	C.TOTAL (m)	QUANT + 10% (Barras)	UNIT	PESO + 10% (kg)
CA50	8.0	278.3	54	12 m	251
CA60	5.0	625.2	58	12 m	106
PESO TOTAL (kg)					
CA50					251
CA60					106
PESO TOTAL (kg)					
CA50					236
CA60					65.1

Volume de concreto (C-25) = 6.33 m³
Área de forma = 105.53 m²

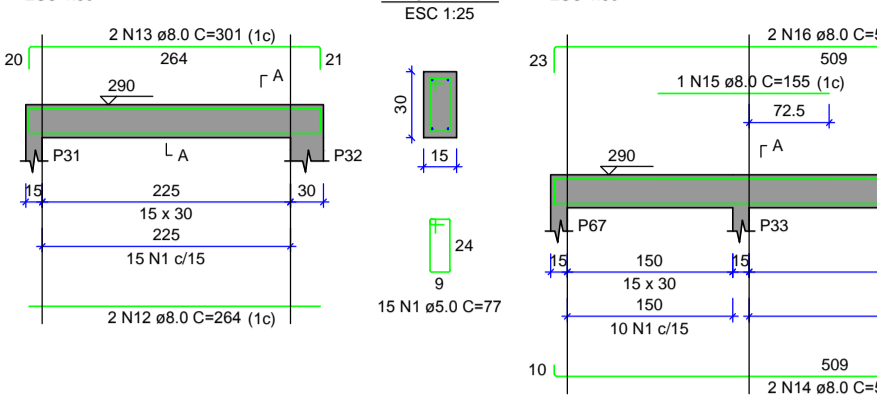
RELAÇÃO DO AÇO

AÇO	N	DIAM (mm)	QUANT	C.UNIT (cm)	C.TOTAL (cm)
V25-L1	1	11.4	2	114.0	228.0
V28-L1	1	11.4	2	114.0	228.0
V31-L1	1	11.4	2	114.0	228.0
V34-L1	1	11.4	2	114.0	228.0
V37-L1	1	11.4	2	114.0	228.0
V25-L2	1	11.4	2	114.0	228.0
V28-L2	1	11.4	2	114.0	228.0
V31-L2	1	11.4	2	114.0	228.0
V34-L2	1	11.4	2	114.0	228.0
V37-L2	1	11.4	2	114.0	228.0
V27-L1	1	11.4	2	114.0	228.0
V30-L1	1	11.4	2	114.0	228.0
V33-L1	1	11.4	2	114.0	228.0
V36-L1	1	11.4	2	114.0	228.0
V39-L1	1	11.4	2	114.0	228.0
V42-L1	1	11.4	2	114.0	228.0
V45-L1	1	11.4	2	114.0	228.0
V48-L1	1	11.4	2	114.0	228.0
V51-L1	1	11.4	2	114.0	228.0
V54-L1	1	11.4	2	114.0	228.0
V57-L1	1	11.4	2	114.0	228.0
V60-L1	1	11.4	2	114.0	228.0
V63-L1	1	11.4	2	114.0	228.0
V66-L1	1	11.4	2	114.0	228.0
V69-L1	1	11.4	2	114.0	228.0
V72-L1	1	11.4	2	114.0	228.0
V75-L1	1	11.4	2	114.0	228.0
V78-L1	1	11.4	2	114.0	228.0
V81-L1	1	11.4	2	114.0	228.0
V84-L1	1	11.4	2	114.0	228.0
V87-L1	1	11.4	2	114.0	228.0
V90-L1	1	11.4	2	114.0	228.0
V93-L1	1	11.4	2	114.0	228.0
V96-L1	1	11.4	2	114.0	228.0
V99-L1	1	11.4	2	114.0	228.0
V102-L1	1	11.4	2	114.0	228.0
V105-L1	1	11.4	2	114.0	228.0
V108-L1	1	11.4	2	114.0	228.0
V111-L1	1	11.4	2	114.0	228.0
V114-L1	1	11.4	2	114.0	228.0
V117-L1	1	11.4	2	114.0	228.0
V120-L1	1	11.4	2	114.0	228.0
V123-L1	1	11.4	2	114.0	228.0
V126-L1	1	11.4	2	114.0	228.0
V129-L1	1	11.4	2	114.0	228.0
V132-L1	1	11.4	2	114.0	228.0
V135-L1	1	11.4	2	114.0	228.0
V138-L1	1	11.4	2	114.0	228.0
V141-L1	1	11.4	2	114.0	228.0
V144-L1	1	11.4	2	114.0	228.0
V147-L1	1	11.4	2	114.0	228.0
V150-L1	1	11.4	2	114.0	228.0
V153-L1	1	11.4	2	114.0	228.0
V156-L1	1	11.4	2	114.0	228.0
V159-L1	1	11.4			

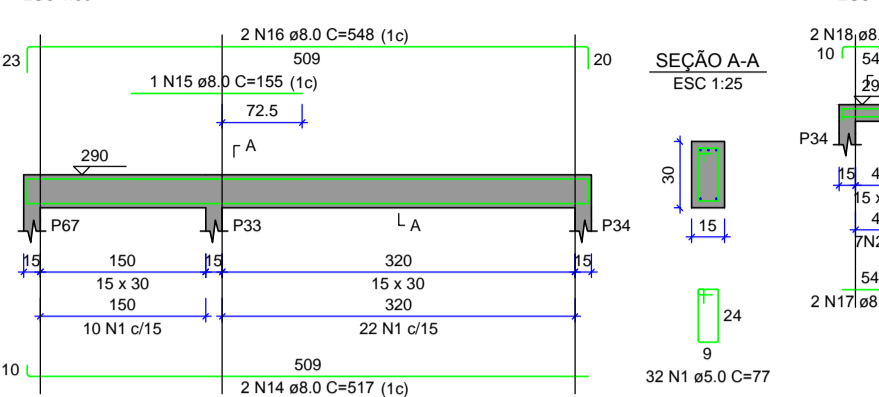
VC8 (15 x 30)



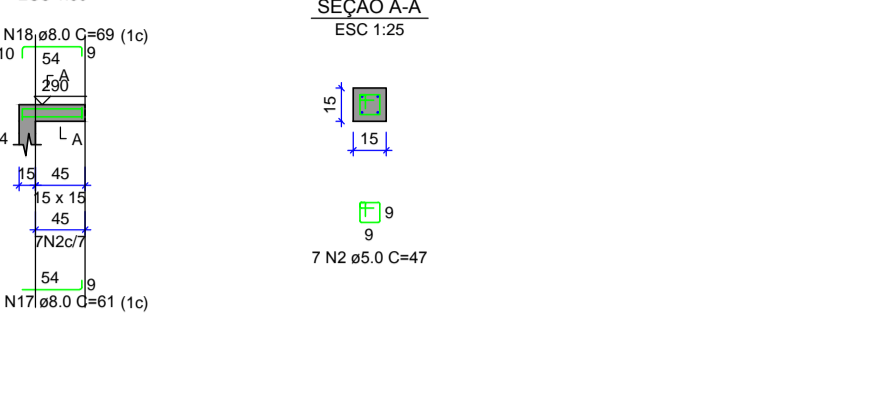
VC9 (15 x 30)



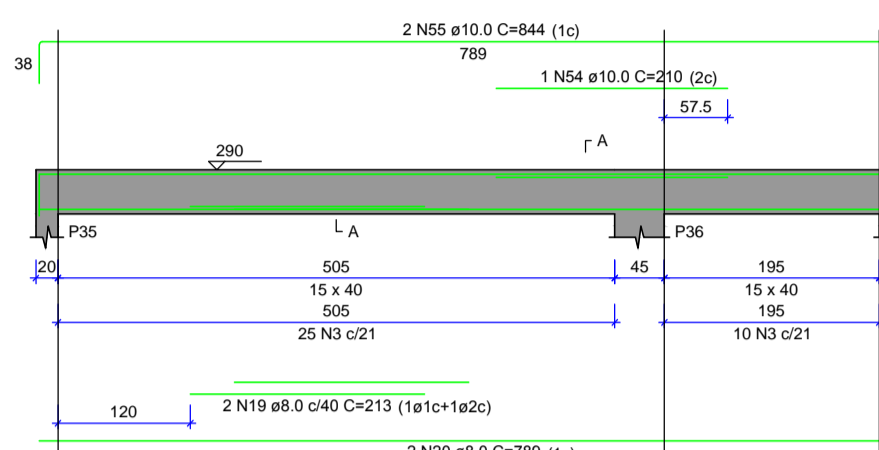
VC10 (15 x 30)



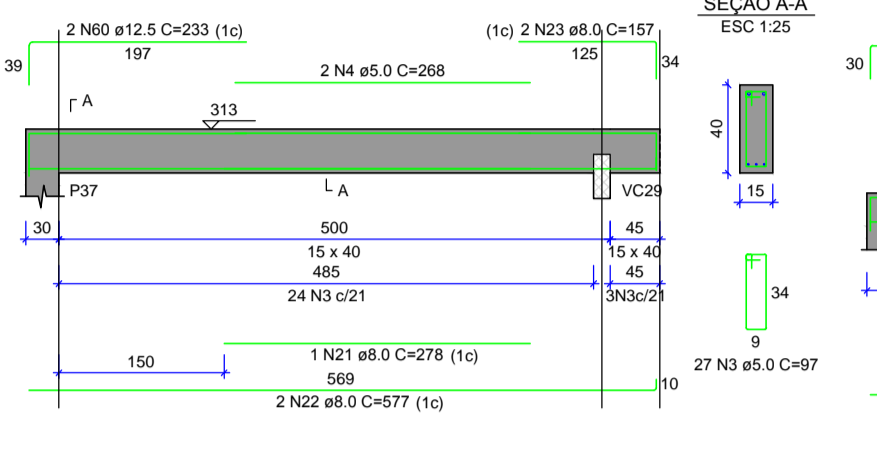
VC11 (15 x 15)



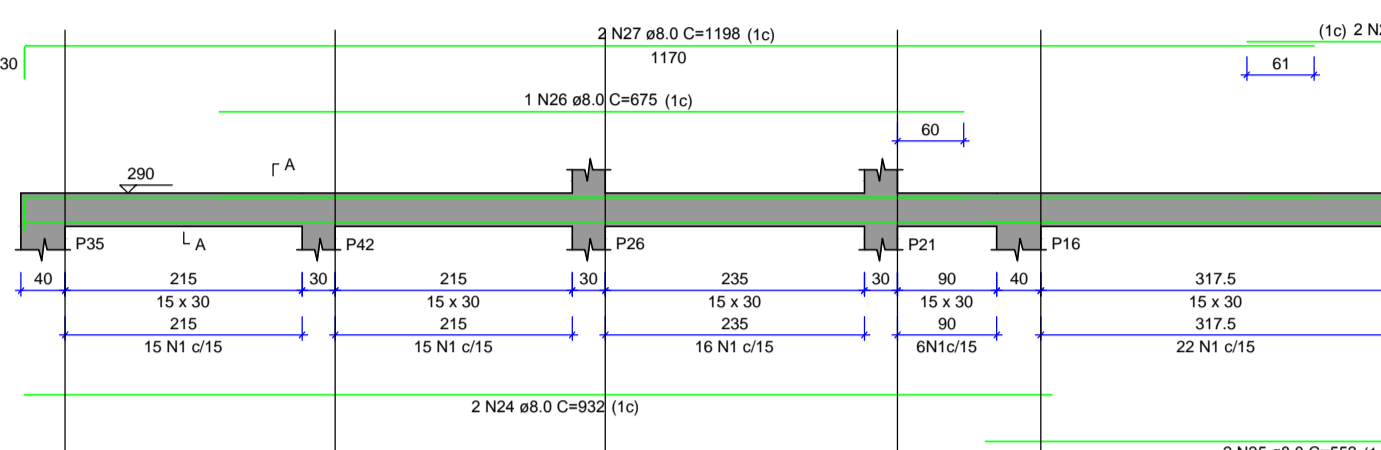
VC12 (15 x 40)



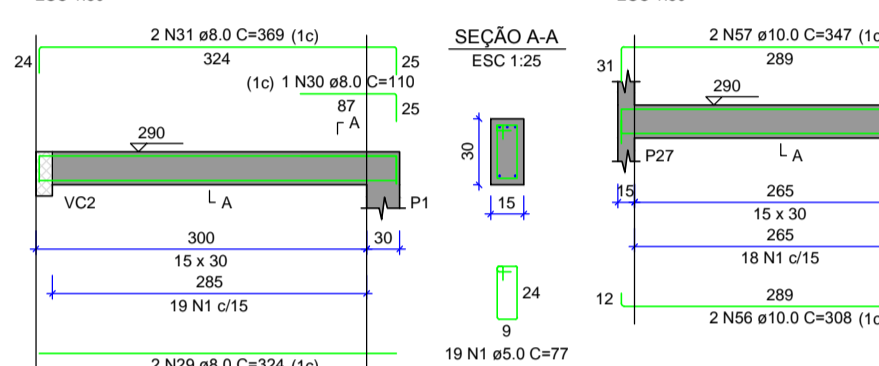
VC13 (15 x 40)



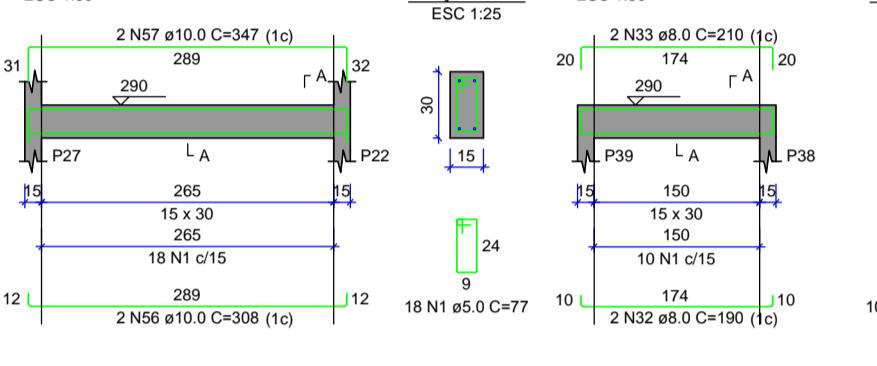
VC14 (15 x 30)



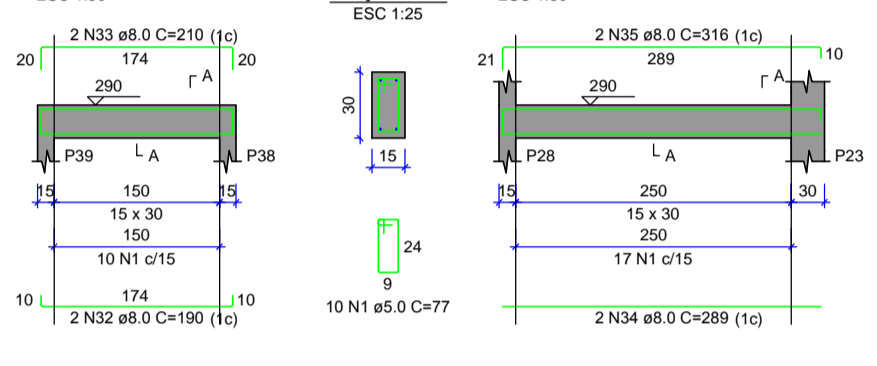
VC15 (15 x 30)



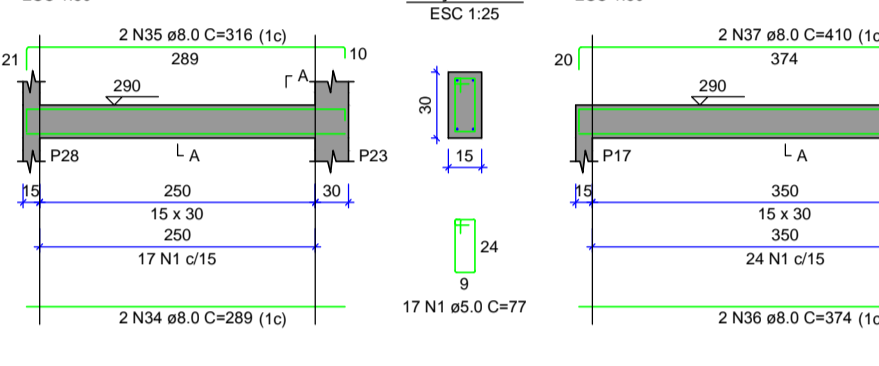
VC16 (15 x 30)



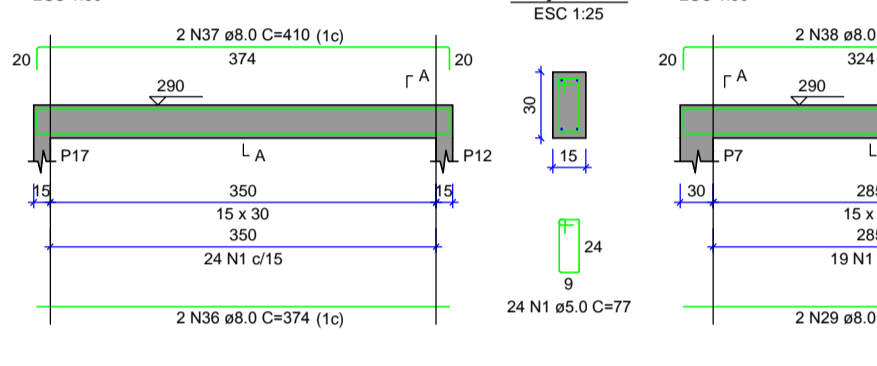
VC17 (15 x 30)



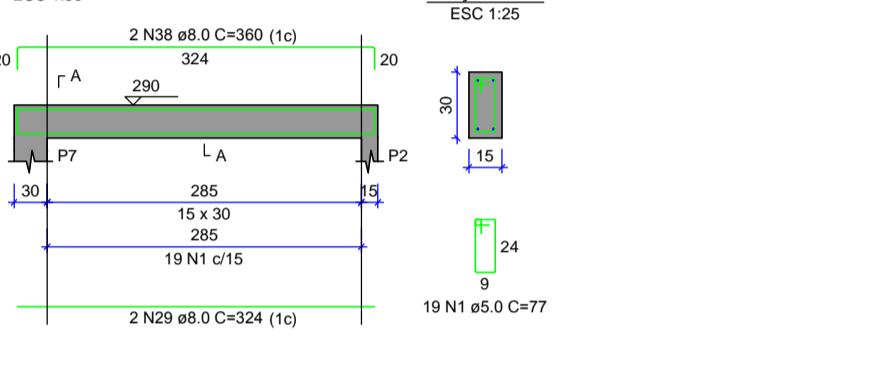
VC18 (15 x 30)



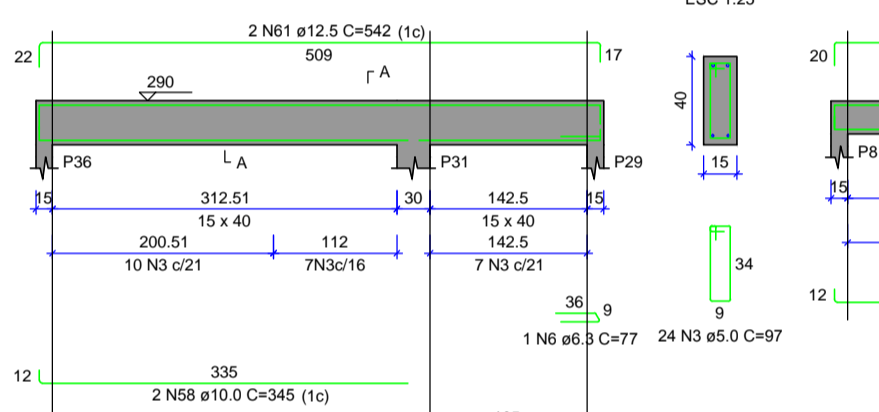
VC19 (15 x 30)



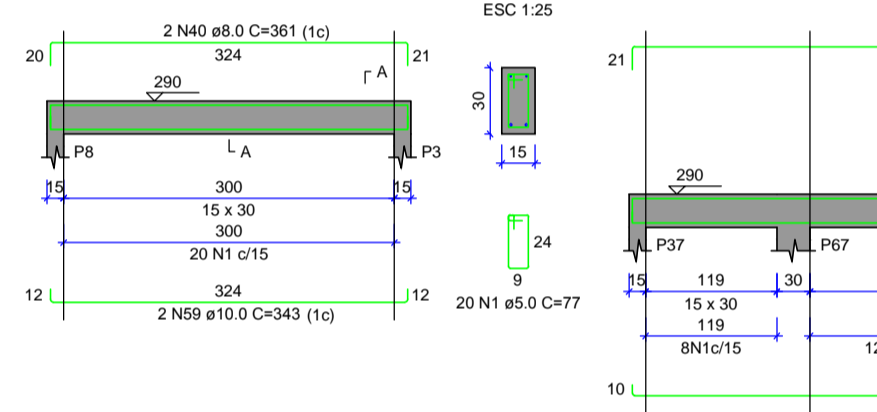
VC20 (15 x 30)



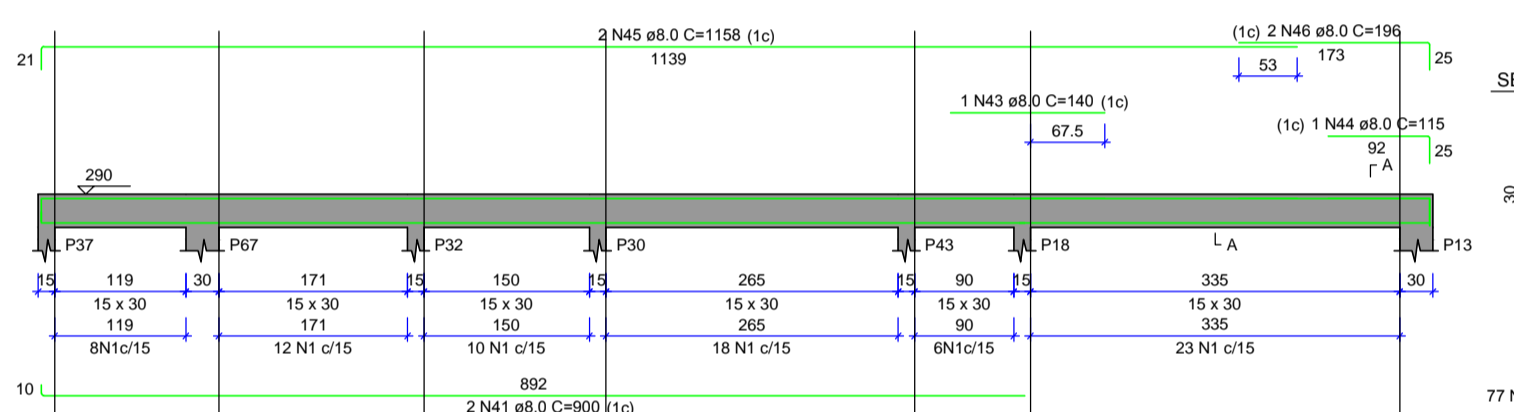
VC21 (15 x 40)



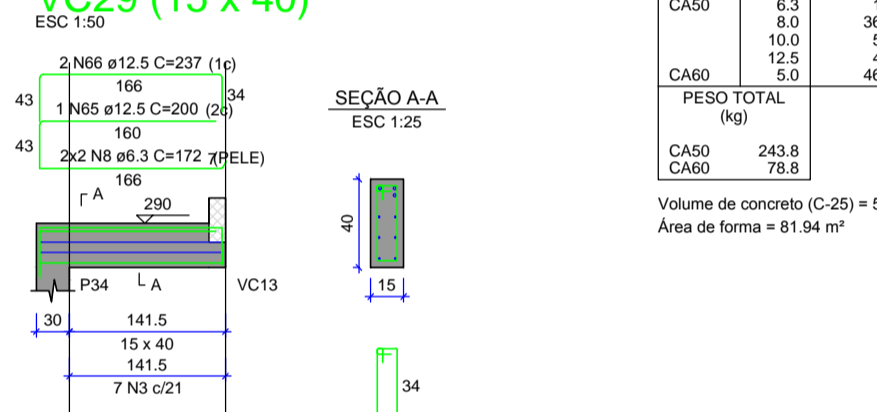
VC22 (15 x 30)



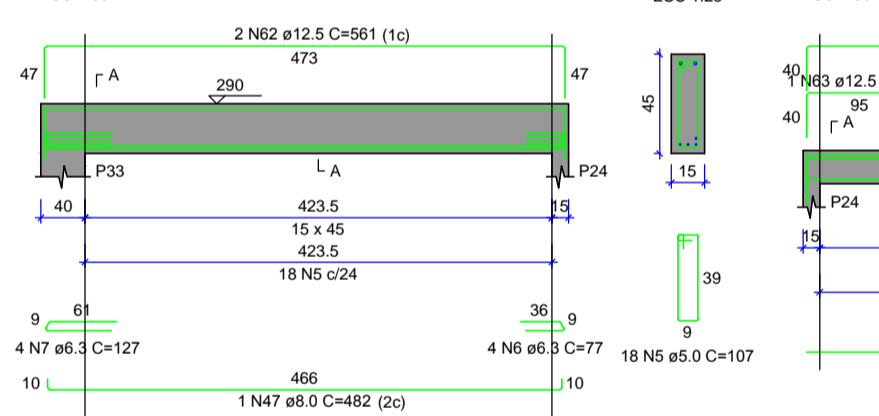
VC23 (15 x 30)



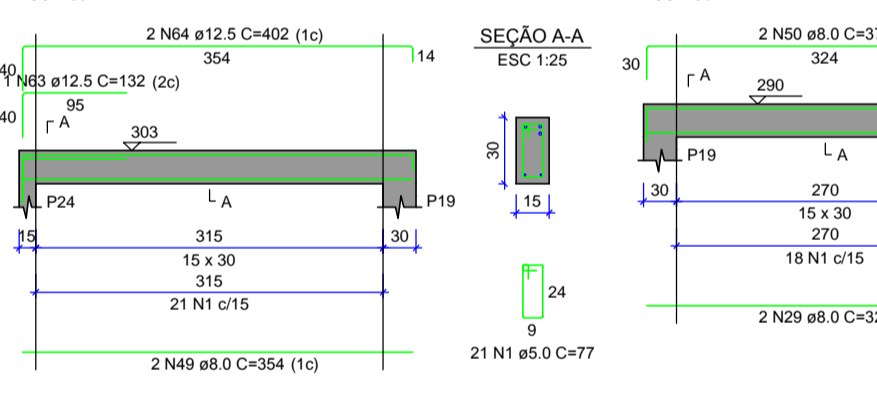
VC29 (15 x 40)



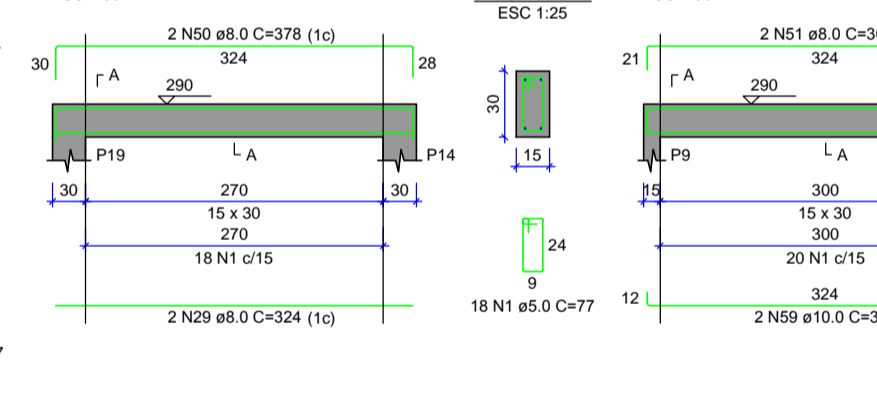
VC24 (15 x 45)



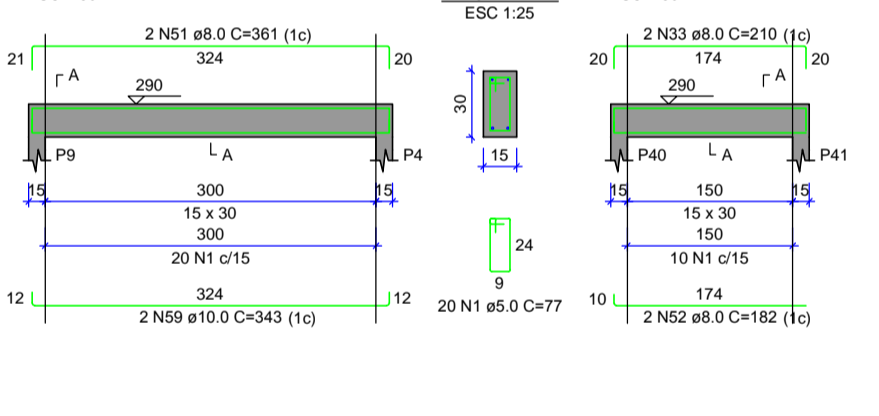
VC25 (15 x 30)



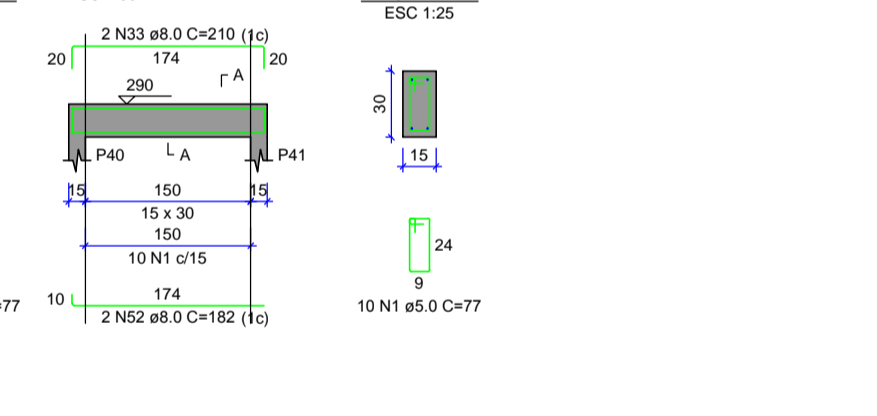
VC26 (15 x 30)



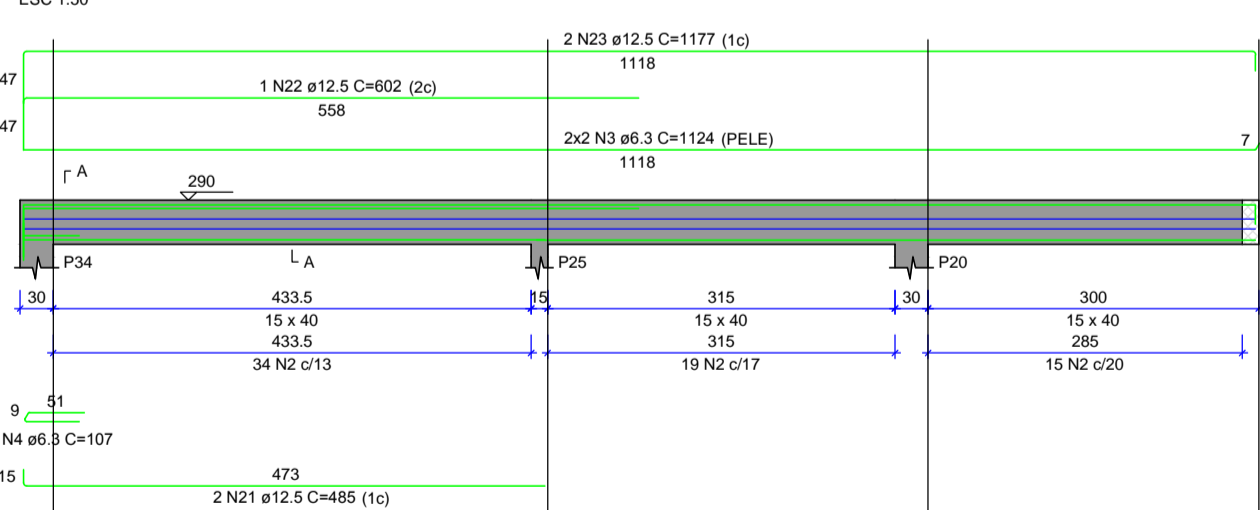
VC27 (15 x 30)



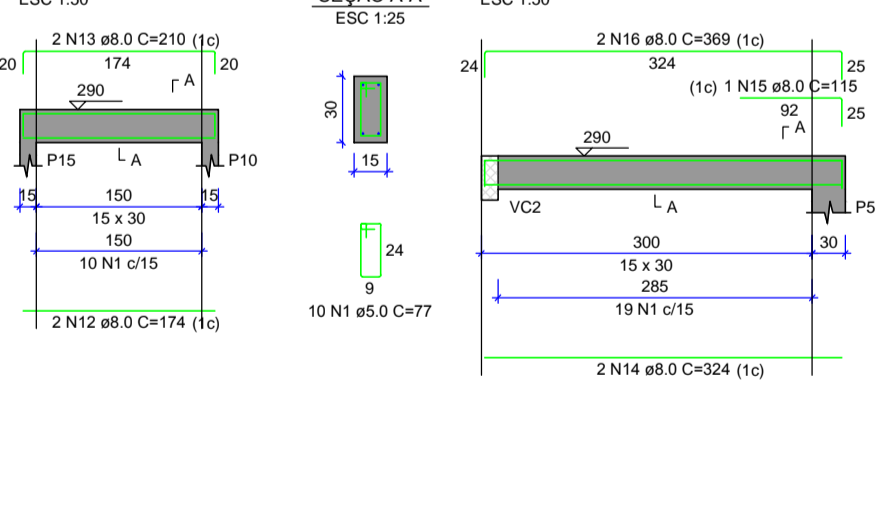
VC28 (15 x 30)



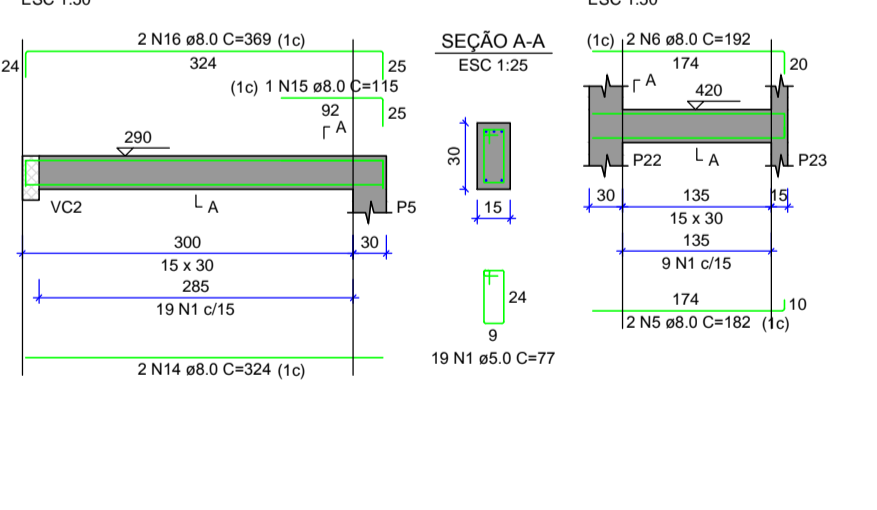
VC30 (15 x 40)



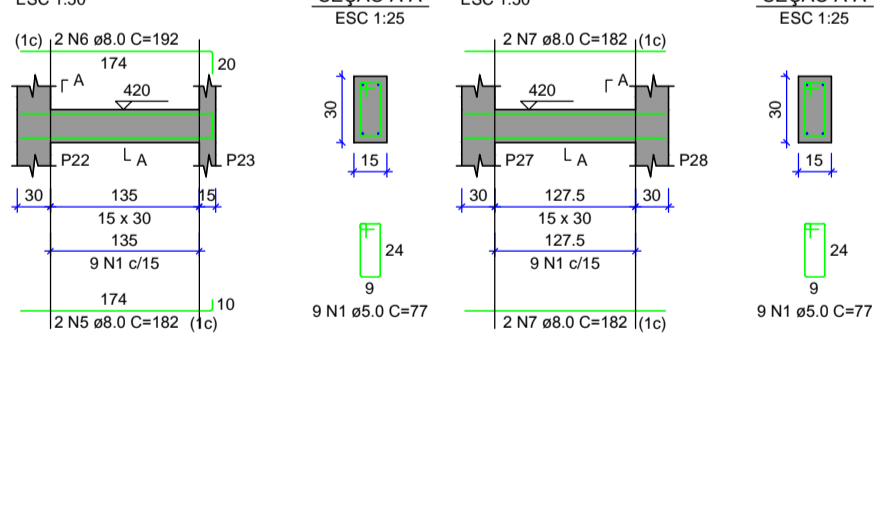
VC31 (15 x 30)



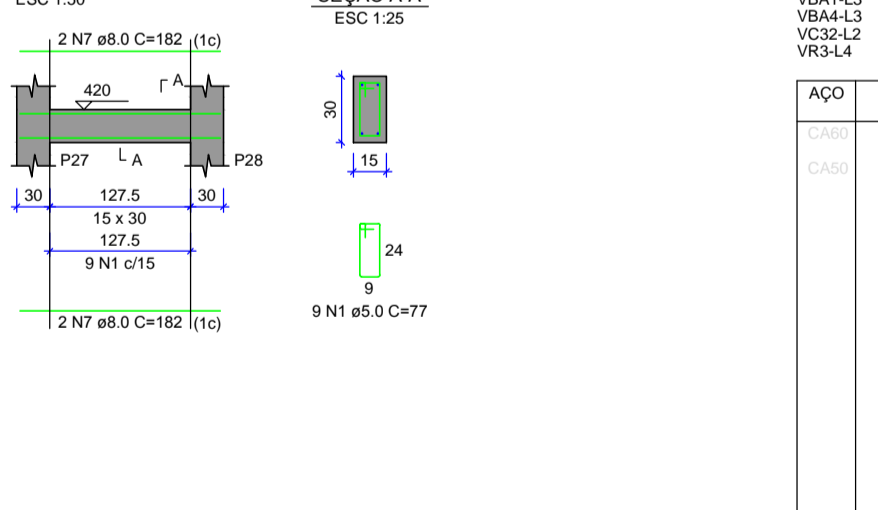
VC32 (15 x 30)



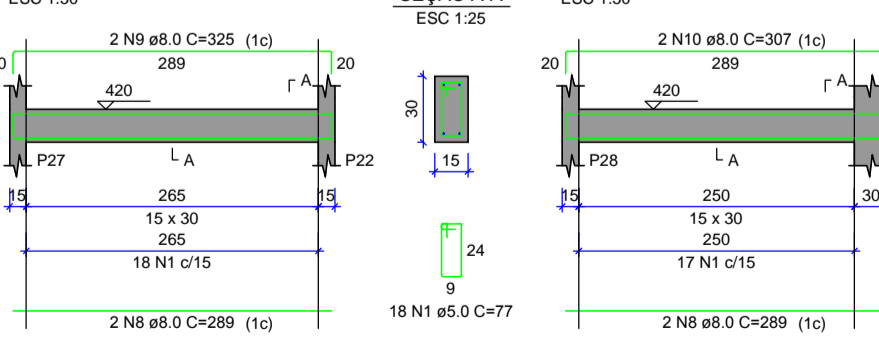
VBA1 (15 x 30)



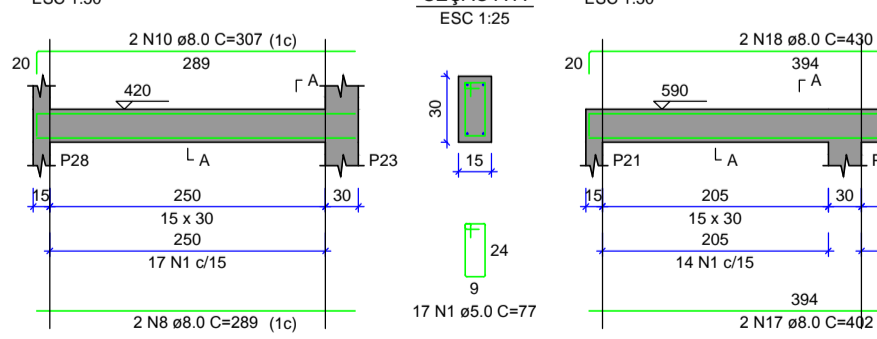
VBA2 (15 x 30)



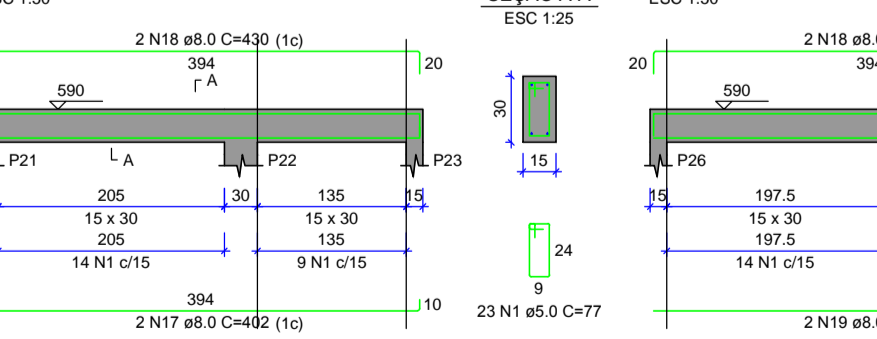
VBA3 (15 x 30)



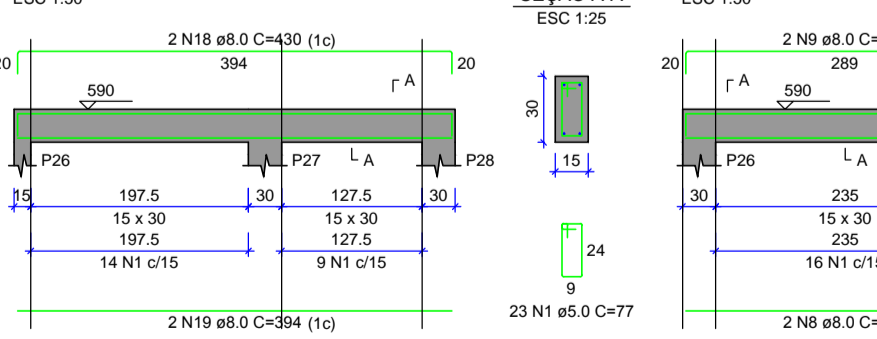
VBA4 (15 x 30)



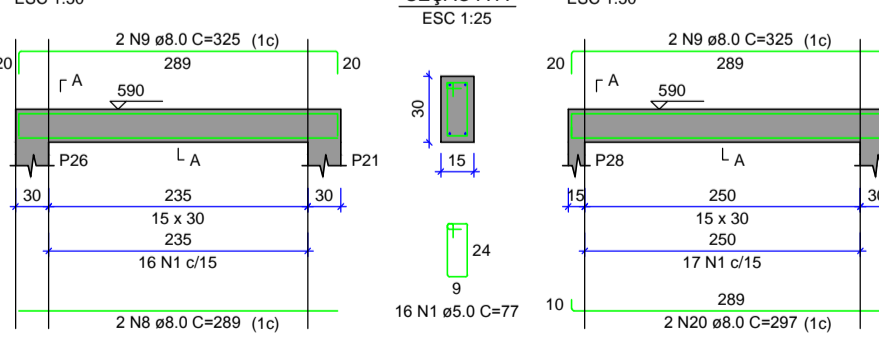
VR1 (15 x 30)



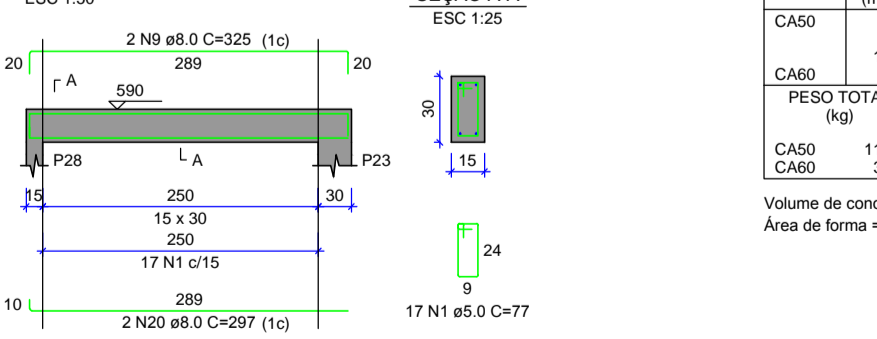
VR2 (15 x 30)



VR3 (15 x 30)



VR4 (15 x 30)



RELAÇÃO DO AÇO

ACO	N	DIAM (mm)	C.TOTAL (m)	QUANT + 10% (Barras)	UNIT (cm)	C.TOTAL (cm)
CA50	1	6.3	15.8	2	12 m	4.3
CA50	2	8.0	364.9	34	12 m	158.4
CA50	3	10.0	52.7	5	12 m	35.7
CA60	1	12.5	42.8	4	12 m	45.4
CA60	2	5.0	464.6	43	12 m	75.8

RESUMO DO AÇO

ACO	DIAM (mm)	C.TOTAL (m)	QUANT + 10% (Barras)	UNIT (cm)	PESO + 10% (kg)
CA50	6.3	15.8	2	12 m	4.3
CA50	8.0	364.9	34	12 m	158.4
CA50	10.0	52.7	5	12 m	35.7
CA60	12.5	42.8	4	12 m	45.4
CA60	5.0	464.6	43	12 m	75.8

Volume de concreto (C-25) = 5.00 m³
Área de forma = 81.94 m²

RELAÇÃO DO AÇO

ACO	N	DIAM (mm)	C.TOTAL (m)	QUANT + 10% (Barras)	UNIT (cm)	C.TOTAL (cm)
CA50	1	6.3	46	2	12 m	12.4
CA50	2	8.0	132.5	13	12 m	57.5
CA50	3	12.5	39.3	4	12 m	41.6
CA60	1	5.0	189.9	18	12 m	32.2

RESUMO DO AÇO

ACO	DIAM (mm)	C.TOTAL (m)	QUANT + 10% (Barras)	UNIT (cm)	PESO + 10% (kg)
CA50	6.3	46	2	12 m	12.4
CA50	8.0	132.5	13	12 m	57.5
CA50	12.5	39.3	4	12 m	41.6
CA60	5.0	189.9	18	12 m	32.2

Volume de concreto (C-25) = 1.96 m³
Área de forma = 32.10 m²

**PREFEITURA MUNICIPAL DE
PIRACANJUBA**

**SECRETARIA DE
PLANEJAMENTO**

**Estabelecimento Institucional
Casa de Passagem Dona Lia**

Rua 05, Quadra 03, Lote 11-A - Conjunto Pouso Alto
Piracanjuba-GO

Via o projeto em Realidade Aumentada
Basta o App Augment (gratuito)
Ler o QRCode

PROJETO ESTRUTURAL

Proprietário: Prefeitura Municipal de Piracanjuba
CNPJ 01.179.647/0001-95

Projeto e Responsável Técnico: José Wellington Silva Moreira
Engenheiro Civil
CREA 51810-D-4

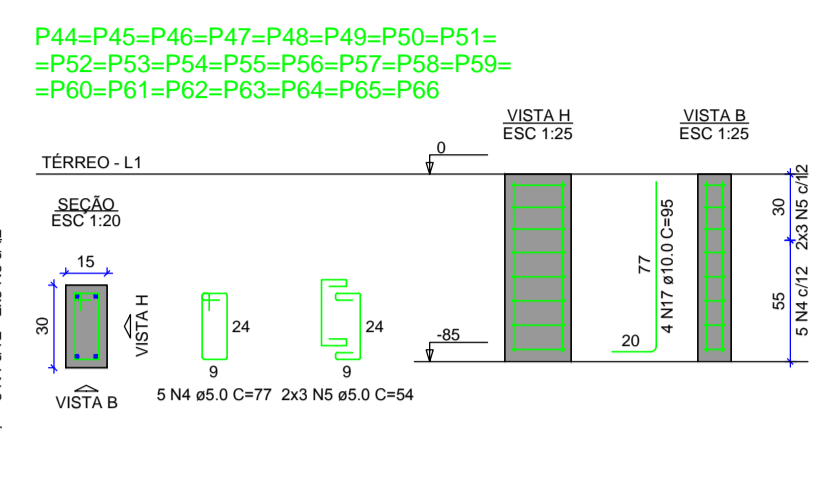
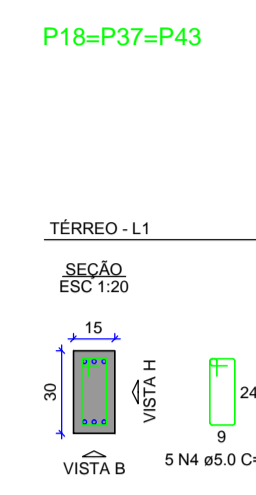
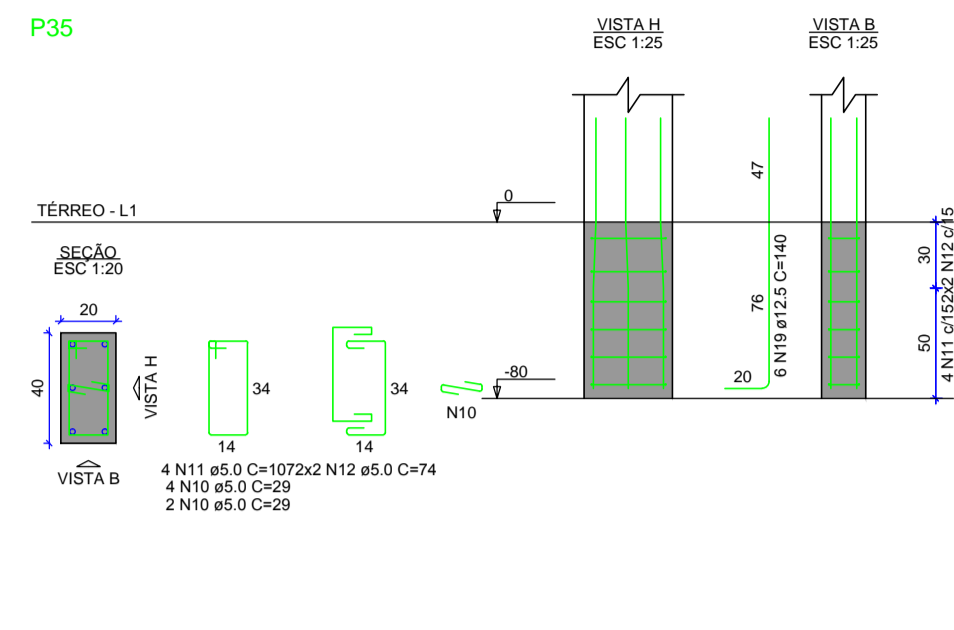
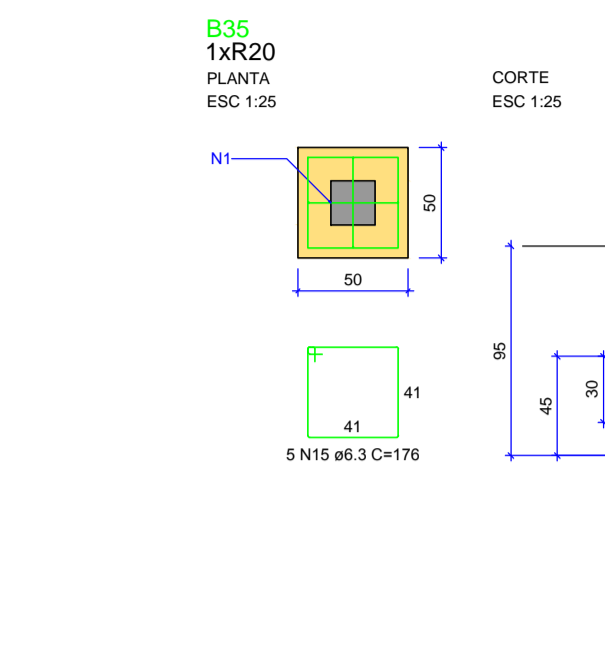
Condição: NBR - 6118 / 2014
ESPECIFICAÇÃO DOS MATERIAIS:
Fôr = VER OBSERVAÇÕES
E= VER OBSERVAÇÕES
Relação = S.B, S.B+mg=H1, AÇO CA50 e CA60

IMPORTANTE:
S.O.B. = 145.56
S.F. Contorno:
NBR - 6118 / 2014

EXECUÇÃO:
DE ACORDO COM A
NBR - 14931 / 2003

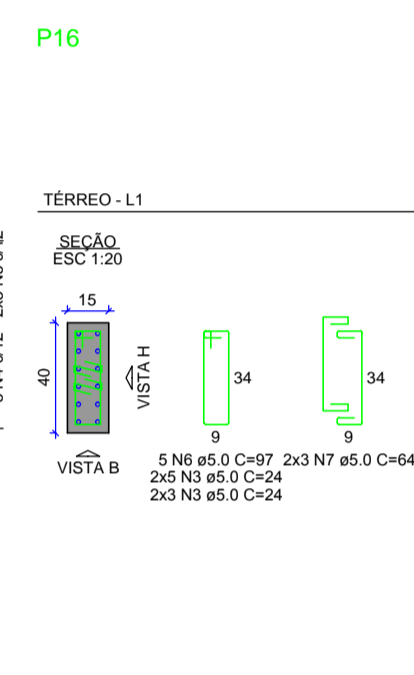
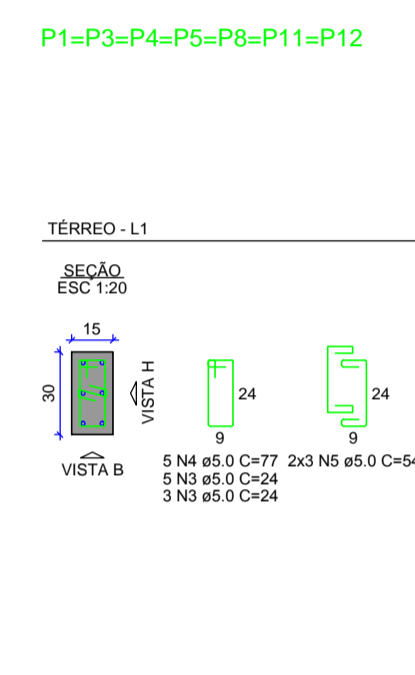
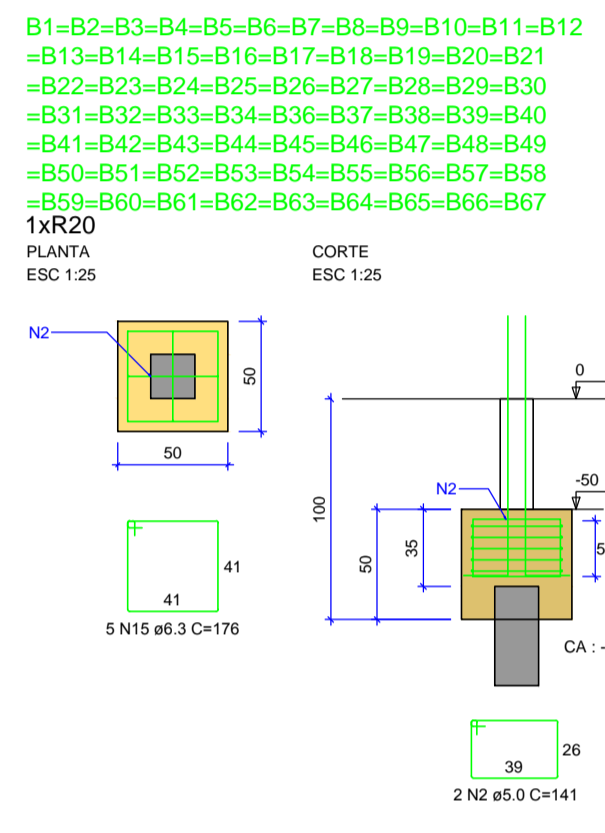
Setembro 2021

5/6

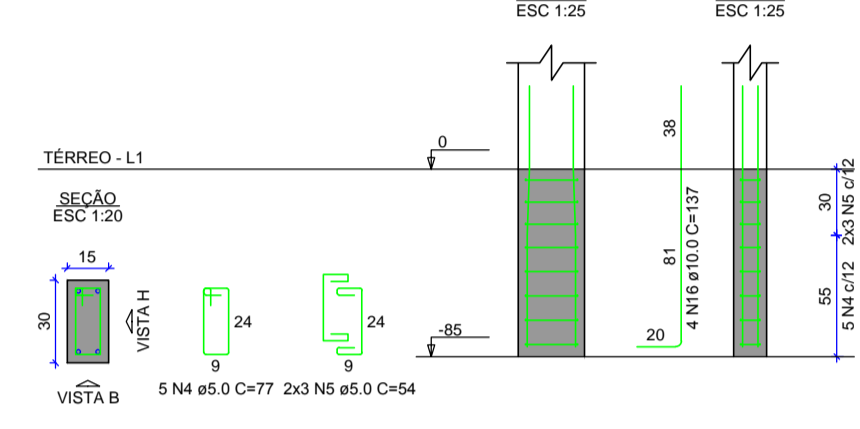


RELAÇÃO DO AÇO

ACO	N	DIAM (mm)	QUANT	C.UNIT (cm)	C.TOTAL (cm)
CA50	1	10,0	22	141	1572
CA50	2	10,0	22	141	1572
CA50	3	10,0	22	141	1572
CA50	4	10,0	22	141	1572
CA50	5	10,0	22	141	1572
CA50	6	10,0	22	141	1572
CA50	7	10,0	22	141	1572
CA50	8	10,0	22	141	1572
CA50	9	10,0	22	141	1572
CA50	10	10,0	22	141	1572
CA50	11	10,0	22	141	1572
CA50	12	10,0	22	141	1572
CA50	13	10,0	22	141	1572
CA50	14	10,0	22	141	1572
CA50	15	10,0	22	141	1572
CA50	16	10,0	22	141	1572
CA50	17	10,0	22	141	1572
CA50	18	10,0	22	141	1572
CA50	19	10,0	22	141	1572
CA50	20	10,0	22	141	1572
CA50	21	10,0	22	141	1572
CA50	22	10,0	22	141	1572
CA50	23	10,0	22	141	1572
CA50	24	10,0	22	141	1572
CA50	25	10,0	22	141	1572
CA50	26	10,0	22	141	1572
CA50	27	10,0	22	141	1572
CA50	28	10,0	22	141	1572
CA50	29	10,0	22	141	1572
CA50	30	10,0	22	141	1572
CA50	31	10,0	22	141	1572
CA50	32	10,0	22	141	1572
CA50	33	10,0	22	141	1572
CA50	34	10,0	22	141	1572
CA50	35	10,0	22	141	1572
CA50	36	10,0	22	141	1572
CA50	37	10,0	22	141	1572
CA50	38	10,0	22	141	1572
CA50	39	10,0	22	141	1572
CA50	40	10,0	22	141	1572
CA50	41	10,0	22	141	1572
CA50	42	10,0	22	141	1572
CA50	43	10,0	22	141	1572
CA50	44	10,0	22	141	1572
CA50	45	10,0	22	141	1572
CA50	46	10,0	22	141	1572
CA50	47	10,0	22	141	1572
CA50	48	10,0	22	141	1572
CA50	49	10,0	22	141	1572
CA50	50	10,0	22	141	1572
CA50	51	10,0	22	141	1572
CA50	52	10,0	22	141	1572
CA50	53	10,0	22	141	1572
CA50	54	10,0	22	141	1572
CA50	55	10,0	22	141	1572
CA50	56	10,0	22	141	1572
CA50	57	10,0	22	141	1572
CA50	58	10,0	22	141	1572
CA50	59	10,0	22	141	1572
CA50	60	10,0	22	141	1572
CA50	61	10,0	22	141	1572
CA50	62	10,0	22	141	1572
CA50	63	10,0	22	141	1572
CA50	64	10,0	22	141	1572
CA50	65	10,0	22	141	1572
CA50	66	10,0	22	141	1572
CA50	67	10,0	22	141	1572
CA50	68	10,0	22	141	1572
CA50	69	10,0	22	141	1572
CA50	70	10,0	22	141	1572
CA50	71	10,0	22	141	1572
CA50	72	10,0	22	141	1572
CA50	73	10,0	22	141	1572
CA50	74	10,0	22	141	1572
CA50	75	10,0	22	141	1572
CA50	76	10,0	22	141	1572
CA50	77	10,0	22	141	1572
CA50	78	10,0	22	141	1572
CA50	79	10,0	22	141	1572
CA50	80	10,0	22	141	1572
CA50	81	10,0	22	141	1572
CA50	82	10,0	22	141	1572
CA50	83	10,0	22	141	1572
CA50	84	10,0	22	141	1572
CA50	85	10,0	22	141	1572
CA50	86	10,0	22	141	1572
CA50	87	10,0	22	141	1572
CA50	88	10,0	22	141	1572
CA50	89	10,0	22	141	1572
CA50	90	10,0	22	141	1572
CA50	91	10,0	22	141	1572
CA50	92	10,0	22	141	1572
CA50	93	10,0	22	141	1572
CA50	94	10,0	22	141	1572
CA50	95	10,0	22	141	1572
CA50	96	10,0	22	141	1572
CA50	97	10,0	22	141	1572
CA50	98	10,0	22	141	1572
CA50	99	10,0	22	141	1572
CA50	100	10,0	22	141	1572



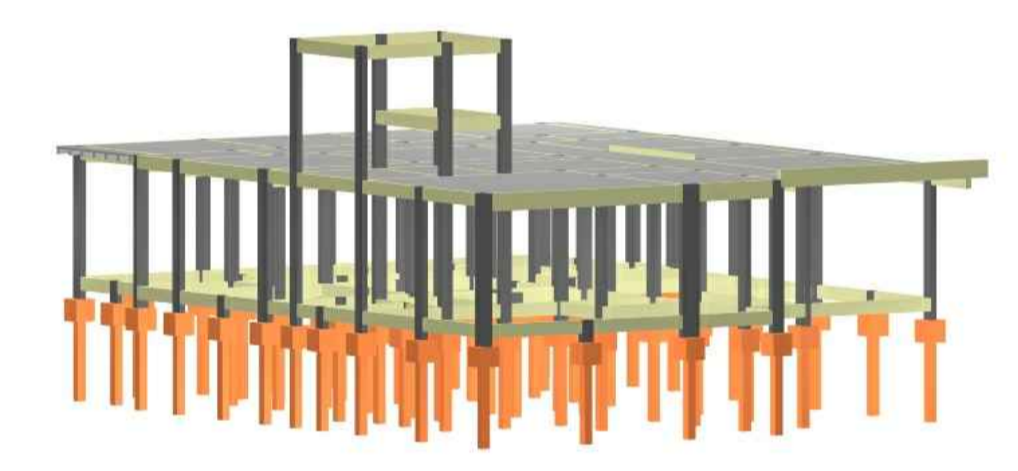
P2=P6=P7=P9=P10=P13=P14=P15=P17=
 =P21=P22=P23=P26=P27=P28=P29=P30=
 =P31=P32=P34=P38=P39=P40=P41=P42=
 =P67



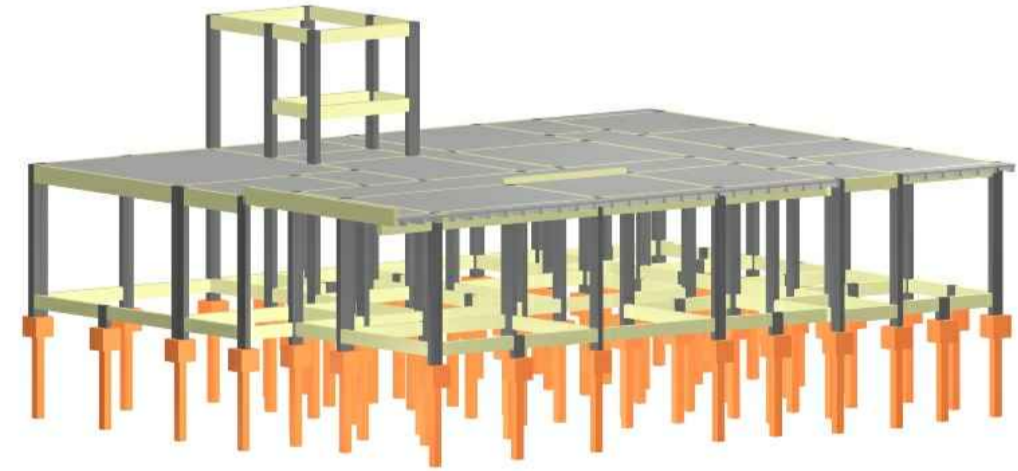
RESUMO DO AÇO

ACO	DIAM (mm)	C.TOTAL (m)	QUANT + 10% (Barras)	UNIT	PESO + 10% (kg)
CASO	8,3	589,6	25	12 m	186,7
CASO	10,0	352,9	33	12 m	241,4
CASO	12,5	22,8	3	12 m	24,3
CASO	16,0	9,4	1	12 m	16,4
CASO	5,0	690,9	64	12 m	117,1
PESO TOTAL (kg)					
CASO		440,7			
CASO		117,1			

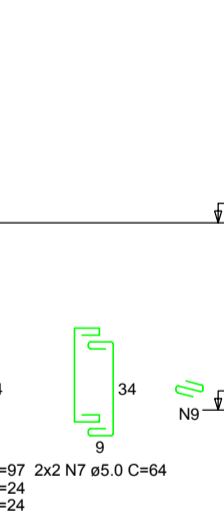
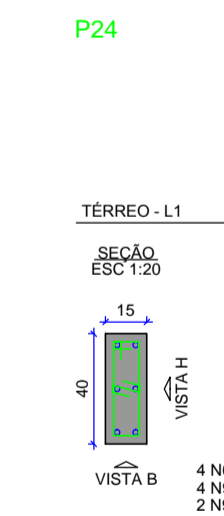
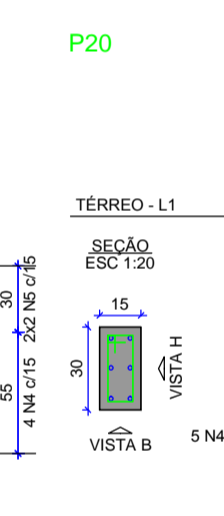
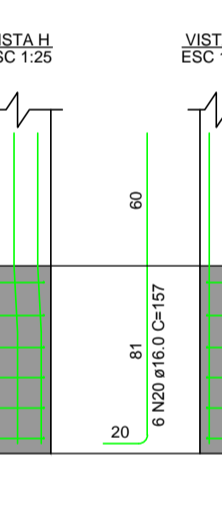
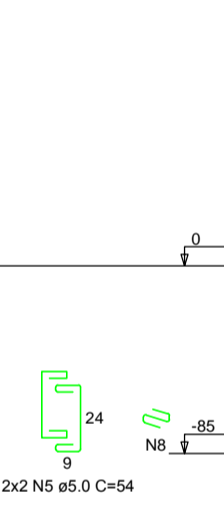
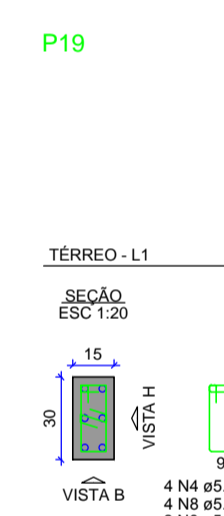
Volume de concreto (C-25) = 10,61 m³
 Área de forma = 119,12 m²



Maquete Projeto Estrutural - Vista 01



Maquete Projeto Estrutural - Vista 02



PREFEITURA MUNICIPAL DE **PIRACANJUBA** SECRETARIA DE PLANEJAMENTO
 TRABALHO POR TODA GENTE

Estabelecimento Institucional Casa de Passagem Dona Lia

Rua 05, Quadra 03, Lote 11-A - Conjunto Pouso Alto
Piracanjuba-GO

Proprietário: Prefeitura Municipal de Piracanjuba
 CNPJ 01.179.647/0001-95

Projeto e Responsável Técnico: José Welinton Silva Moreira
 Engenheiro Civil
 CREA 51810-D-4

Conteúdo: Detalhamento de Blocos
 Detalhamento de Pilares
 Maquete Projeto Estrutural

Notas: NBR - 6118 / 2014
 ESPECIFICAÇÃO DOS MATERIAIS:
 Fôr = VER OBSERVAÇÕES
 E= VER OBSERVAÇÕES
 Relação = S.B, S.Bmp=H1, AÇO CASO e CASO
 IMPORTANTE:
 NBR - 6118 / 2014
 NBR - 6118 / 2014
 EXECUÇÃO:
 DE ACORDO COM A
 NBR - 14931 / 2003

6/6