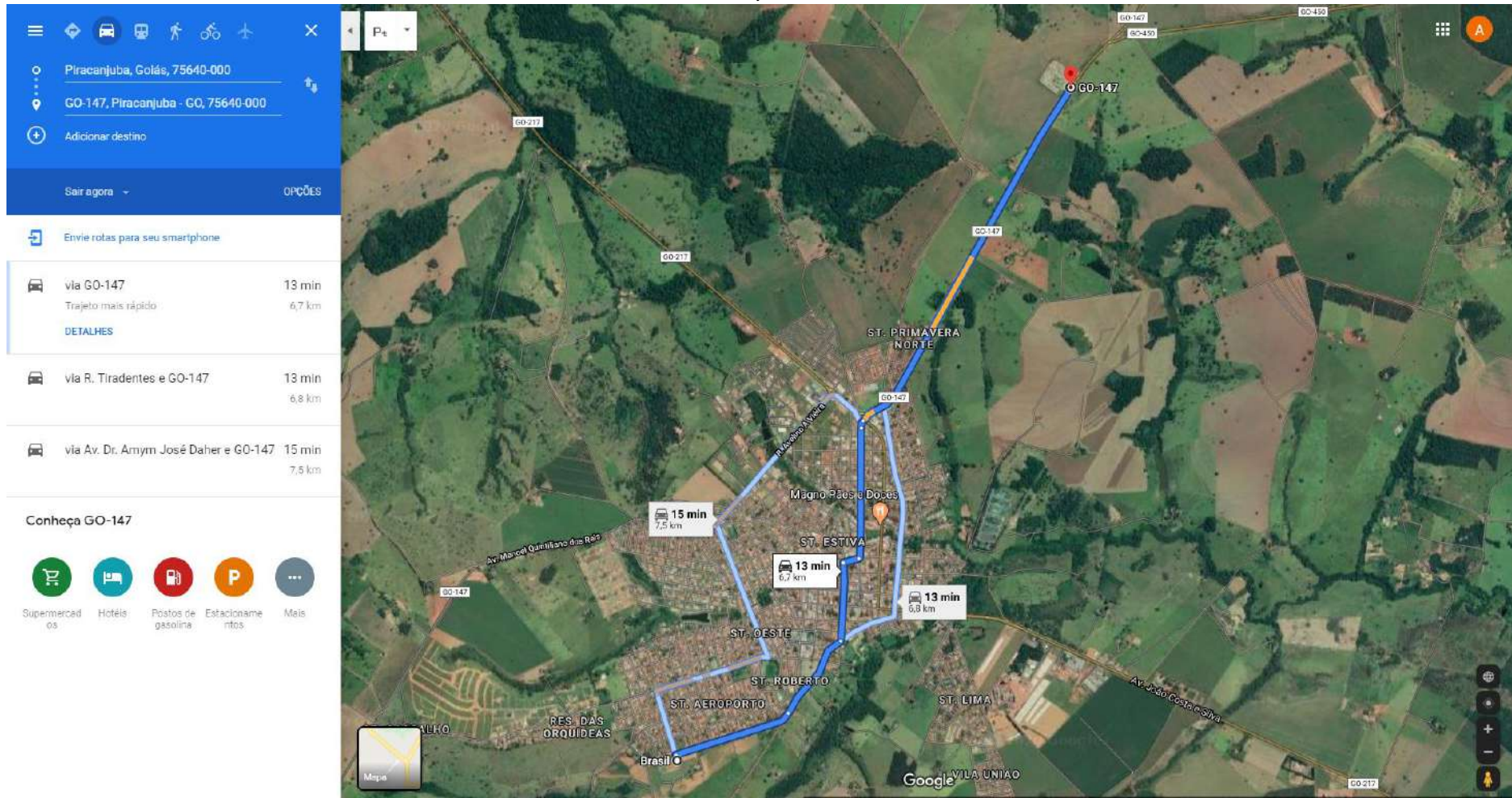


**TRANSPORTE MATERIAL DE BOTA-FORA**  
**ORIGEM: ÁREA DE INTERVENÇÃO**  
**DESTINO: ATERRO SANITÁRIO MUNICIPAL**  
**DT: 6,7 KM**



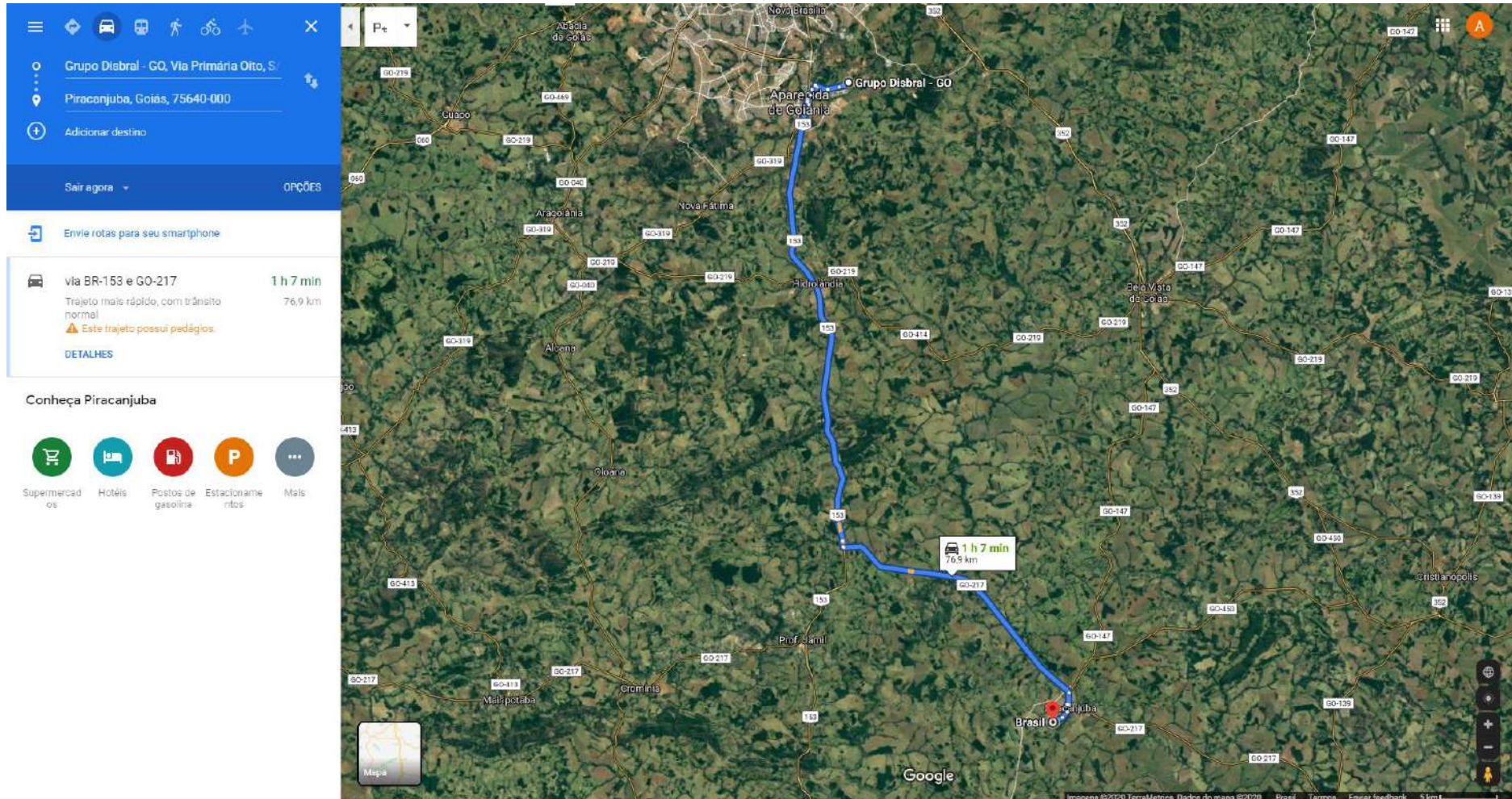
**TRANSPORTE DE AGREGADOS**  
**ORIGEM: PEDREIRA BRITEC**  
**DESTINO: ÁREA DE INTERVENÇÃO**  
**DT: 70,8 KM**

The image shows a Google Maps interface with a route from Pedreira Britec to Piracanjuba, Goiás. The route is highlighted in blue on a satellite map. The interface includes a search bar at the top left, a list of route options, and a sidebar with various icons for services like supermarkets and hotels. The route options are as follows:

Route Description	Duration	Distance
via BR-352 e GO-147 Trajeto mais rápido, com trânsito normal	55 min	70,8 km
via BR-153 e GO-217	1 h 40 min	91,5 km

The map shows the route starting from Pedreira Britec and ending in Piracanjuba, passing through several towns including Aparecida de Goiânia, Hidrolândia, and Bela Vista de Goiás. The route is marked with road numbers such as GO-352, GO-147, GO-153, and GO-217. A callout box on the map indicates a duration of 1 h 40 min and a distance of 91,5 km for the route via BR-153 and GO-217.

**TRANSPORTE BRITA E MATERIAL ASFÁLTICO**  
**ORIGEM: DISBRAL**  
**DESTINO: ÁREA DE INTERVENÇÃO**  
**DT: 76,9 KM**



**TRANSPORTE MATERIAL DE JAZIDA**  
**ORIGEM: CASCALHEIRA**  
**DESTINO: ÁREA DE INTERVENÇÃO**  
**DT: 9,4 KM**

